


Full Time Courses 2014-15



Gower College Swansea
Coleg Gŵyr Abertawe



 Like us on
Facebook

Open Evenings

2013-14

 **5.30 - 7.30pm**

Gorseinon campus:

November Monday 11

January Monday 20

March Monday 3

Tycoch campus:

November Tuesday 19

January Wednesday 15

March Thursday 13

Llwyn y Bryn campus:

December Thursday 5

February Thursday 6

In some instances we are able to offer transport from schools to the college.

What's involved:

Staff available to provide information on:

- Courses
- Progression routes
- Careers advice & guidance
- Funding

You will also be able to view the college facilities.



If you require this publication in an alternative format please telephone 01792 284000 or 01792 890700.

All the information in this prospectus is correct at the time of publication.

www.gowercollegeswansea.ac.uk



Contents

Your Choices	02
Apprenticeships	03
Sport Academies	04
Welsh BaccaLaureate	05
Your Step by Step Guide to becoming a Student	07
Student Life	08
The Welsh Dimension	09
Information for Parents	09
Student Support	10
Tutorial Support	10
Costs and Funding Support	11
Transport	11
Access to Higher Education	12
A Levels	16
Vocational	34





Mark Jones

Mark Jones
Principal and Chief Executive
Gower College Swansea

Welcome to the Gower College Swansea prospectus for full time courses for 2014/15.

The merger in 2010 of the two legacy Colleges – Gorseinon College and Swansea College - has resulted in our new College being able to offer the widest range of both academic and vocational courses – up to and including higher education courses – with, of course, one of the strongest reputations for high quality teaching and learning, not just in Swansea, but across the whole of Wales.

For example, Gower College Swansea has an excellent track record in student progression. Each year, over 900 students progress to university - of these, about 145 students are accepted by Russell Group institutions and a further 45 by 1994 Group universities. Some 540 progress to Welsh universities. In 2013, ten of our students were successful in their applications to Oxford and Cambridge. Many other graduates have gone on to launch successful careers in sport, fashion and catering, to name just a few.

Our support for students is second to none and applies equally to all of our students – whether

they are studying A Levels or Performing Arts at our Gorseinon Campus; Art and Design at our Llwyn y Bryn Campus; Business, Accounting and Professional Courses at Sketty Hall or the widest range of vocational provision in areas such as Engineering, Care, Catering, Hair & Beauty or Sport at our Tycoch Campus.

So why don't you get in contact and find out more?

Choosing what to do after school is one of the most important decisions you will make. Whether you already know which career path to follow or are keeping your options open, we are here to help.

We're here to help you make the right decisions about your future. If you need advice about course options, funding, or any aspect of college life, contact us or come along to one of our open evenings.

One piece of advice - every year the College receives far more applications than places available and some of our courses are full as early as January or February. So please don't delay in applying as we don't want you to be disappointed.

Gorseinon Campus

Students at Gorseinon have access to nearly 50 A Level subjects and a wide range of vocational courses.

A work based learning provision, including apprenticeships, is also available here. Amongst the specialist facilities provided are science labs and a centre for the performing and creative arts. The campus is based in a pleasant residential area of Gorseinon.

Llwyn y Bryn Campus

Students come to Llwyn y Bryn to explore a diverse range of areas including art and design, fashion, fine art, graphics, media, music and photography. The campus provides students with 21st century facilities set within the beautiful early-20th century former Girls' High School building. The campus features specialist art studios, digital darkrooms and a fully equipped recording studio.

Tycoch Campus

Tycoch is a bustling and vibrant base for students on a wide variety of vocational, access and apprenticeship courses.

Many of our well-established vocational areas, such as health and social care, hospitality and catering, travel and tourism, business, science, sport, motor vehicle and engineering are available here. Specialist facilities include The Vanilla Pod training restaurant and Tycoch Sports Centre.

The campus is within walking distance of Sketty and transport links to and from Swansea city centre are excellent.

Broadway Hair, Beauty & Holistics Centre

Well established as a Centre of Excellence, the Broadway Centre offers students a thorough grounding in all aspects of hair, beauty and holistic therapies. It delivers a range of courses - including vocational, access, NVQ and diploma levels - in a modern, professional environment with a strong commercial focus.

The Broadway Centre is situated at the top end of the Tycoch campus. It offers a range of competitively priced services to college staff, students and members of the public. The college also delivers training at the Kingsway Hair Academy in the city centre.

Your Choices

It is very important that you choose the right course to progress to the career you want to pursue.

Our student advisers can help you choose the right course options. We may also be visiting your school to give you information and guidance, or you can contact us direct.

Assessment on some courses will be by examination whereas other courses will be a combination of coursework and exams - this may help with making a decision.

You can still go on to higher education if you opt for vocational qualifications so choose the course that suits you best.

Many courses have minimum entry requirements so be aware of these when making your choices.

Check at the interview stage if there's any extra work required, for example work placements, educational visits or out-of-hours projects. Don't forget to ask about the amount of assignments you'll be expected to complete on your course too, particularly if you opt to study three or four A Levels.

Some courses will have additional costs associated with them - for example uniforms or equipment - so make sure you ask about this.

For the full listing of A Level subjects, see page 16.

For the full listing of vocational and apprenticeship courses, see page 34.



Apprenticeships

Work, Empower, Employ



Apprenticeship programmes are funded by the Welsh Government and give you the opportunity to gain experience and qualifications while you are working. Anyone over the age of 16 can sign up for an apprenticeship and they won't cost you a penny.

What programmes are available?

Foundation Apprenticeship (Level 2), Apprenticeship (Level 3) and Higher Apprenticeships (Level 4).

What career routes are available?

- Accountancy (membership fees payable)
- Childcare
- Digital Technology (Electronics)
- Electrical Engineering
- Electrical Installation
- Engineering Maintenance
- Engineering Technical Support
- Extractive Minerals (Mining)
- Financial Services
- Gas Engineering
- Hairdressing
- Health and Social Care
- Mechanical Engineering
- Motor Vehicle
- Performing Manufacturing Operations
- Plumbing
- Technical Theatre
- Welding and Fabrication

Who can apply?

Apprenticeships are open to anyone:

- aged 16+ looking to gain qualifications and work experience
- leaving school and looking for training outside of the classroom
- returning to work after a period of unemployment
- looking for a career change
- facing redundancy
- looking to develop their own business
- looking to gain qualifications in their current job

What are the benefits?

By signing up to an apprenticeship you can:

- earn a wage
- gain experience in the sector you want to work in
- gain qualifications to develop your career (e.g. QCF, NVQ, BTEC and City & Guilds)
- develop your essential skills for the real world (ICT, application of number, working with others, improving own learning, problem solving and communication)
- enhance your employability chances

For more information on apprenticeships, contact 01792 284000/890700 or email apprenticeships@gowercollegeswansea.ac.uk

Traineeships

If you're aged between 16 and 18 and wish to gain experience and qualifications in the occupation of your choice, then the Welsh Government-funded traineeships are for you – and what's more, they're free.

Engage

Aims to address any learning barriers that may be preventing you from committing to full time work, training or education.

Traineeships Level 1

Aim to identify and address learning barriers that prevent you from entering into vocational learning at Level 2 or entering employment.

What are the benefits?

By enrolling on a traineeship you can:

- increase your motivation and confidence
- develop your essential skills (communication, application of number, ICT, working with others, improving own learning and problem solving)
- receive payment of Training Maintenance Allowance (pro rata)
- enhance your employment chances
- receive a travel subsidy

All learners need to be referred by Careers Wales, contact 0800 0284 844.

Sport ACADEMIES

Gower College Swansea Sport Academies regularly produce top level competitors and coaches in their chosen sports. There are seven separate sports academies providing coaching and elite level competition for students.

In recent years Gower College Swansea has become one of the most successful sports colleges in the UK with teams regularly winning regional and national competitions. Individual students have also gained professional contracts and

been selected for international teams. Former students Leigh Halfpenny and Justin Tipuric recently played on the successful British Lions Tour of Australia, with Leigh being named player of the series.

Academy sport has strong links with professional sport and national governing bodies:

- Ospreys Rugby
- Swansea City Community Trust
- FAW Trust Focus College
- Hockey Wales
- Welsh Netball Association
- Glamorgan Cricket/England and Wales Cricket Board

A number of coaches are involved at international level coaching in their respective sports and players regularly move on to professional and elite level contracts.

All students on the programme are encouraged to gain coaching qualifications and experience in their chosen sports. In 2012/13 over 300 students completed a total of 1500 hours of sports coaching in the community.

Cricket ACADEMY

The Cricket academy train throughout the winter and compete in select invitational competitions in the summer term:

- Exeter University Inter Academy Pro 40 Tournament
- Christ College Brecon T20
- Monmouth School pro 40
- BCS Sport T20 Cup

Co-ordinator: Mike O'Brien
mike.obrien@gowercollegeswansea.ac.uk

Head Coach: Alan Jones

Hockey ACADEMY

- ★ 2013 BCS South West League Champions
- ★ 2013 BCS National Championships (2nd)
- ★ 2013 WCS League Winners
- ★ 2013 BCS Midlands League Winners (mixed)

Co-ordinator: Sian Fowler
sian.fowler@gowercollegeswansea.ac.uk

Rugby ACADEMY

- ★ 2012 British Colleges Sport National Plate Winners

League: WRU Colleges League (games televised on S4C and Scrum V)

Co-ordinator: Dan Cluroe
dan.cluroe@gowercollegeswansea.ac.uk

Football ACADEMY

Men's Football

- ★ 2013 ECFA Premier League Champions
- ★ 2013 ECFA Regional League Champions
- ★ 2012 ECFA Premier Cup Winners
- ★ 2012 WSFA Cup Winners

League: ECFA Premier League
Co-ordinator: Richard South
richard.south@gowercollegeswansea.ac.uk

Ladies Football

- ★ 2012 WSFA Cup Winners
- ★ 2013 Welsh Colleges Sport League Champions

League: WCS League
Head Coach: Andrew Stokes
andrew.stokes@gowercollegeswansea.ac.uk

Netball ACADEMY

- ★ 2013 WCS Division 2 League Champions

Co-ordinator: Sarah Lewis
sarah.lewis@gowercollegeswansea.ac.uk

Surf ACADEMY

- ★ BCS Water Sports Champions 2012
- Morocco Trip 2012
- Portugal Trip 2013

Regular training in Surfing, SUP, Surf Lifesaving and swimming

Co-ordinators:

Lee Hopkins
lee.hopkins@gowercollegeswansea.ac.uk
Ian Peabody
ian.peabody@gowercollegeswansea.ac.uk



CYMHWYSTER BAGLORIAETH CYMRU | WELSH BACCALAUREATE QUALIFICATION

The Welsh Baccalaureate is an exciting qualification which can be combined with both vocational and A Level programmes at intermediate and advanced levels. It encourages independence and adds 'real life' experience to the curriculum, allowing learners to develop both their personal and academic skills.

The Welsh Baccalaureate will help you develop essential skills through a greater breadth and balance of experience.

It improves your existing skills and builds on your interests. You will take part in practical activities as the emphasis is on learning by doing.

The five components of the course are:

1. Essential Skills – communication, application of number, ICT, working with others, problem solving, and improving own learning and performance.
2. Wales, Europe and the World – your chance to learn more about Wales and its relationship with Europe and the world. This includes a language module at a level suitable for you.
3. Work Related Education – includes working with an employer and taking part in a team enterprise activity to help you understand how business and enterprise work.
4. Personal and Social Education – helps you explore issues in the modern world; family, health, relationships, citizenship and sustainable development. It also includes an activity in the local community.
5. Individual Investigation – an opportunity for you to carry out personal research into an area of interest.

Why should I do the Welsh Baccalaureate?

- This is a formally recognised qualification and is achieved through practical activities and coursework (no exams).
- It allows learners to develop their own personal interests and skills.
- At an Advanced Level it currently attracts 120 UCAS points, which is the equivalent of an A grade at A Level. The qualification is at present under review and candidates starting in 2013/14 will be graded from A* - C. It is included in offers from universities across the UK and receives formal recognition that the experiences and skills gained are valuable when studying at degree level and beyond.
- This qualification is valued by employers who appreciate that it gives you the skills you need to work. They understand that it makes students more confident, better communicators and more able to work with people.



We also offer...

Programmes for Schools

Gower College Swansea works closely with schools to deliver a variety of option choices for both sixth form and Key Stage 4 (14-16 year old) learners. The courses have been developed to respond directly to specific skills needs identified by industry sectors.

These courses provide a strong foundation for future career plans and are a great opportunity for students to learn a skill that isn't taught at school e.g. hairdressing, accountancy or engineering.

Contact Helen Lewis
(helen.lewis@gowercollegeswansea.ac.uk).

Part Time Courses

The college provides a huge number of part time courses.

We are passionate about helping people develop and learn new skills so, whether you are looking for a new hobby or want to upskill for work, take a look at our wide range of professional and recreational part time courses.



For more information visit www.gowercollegeswansea.ac.uk

Higher Education

We offer a range of HNC, HND and degree courses both independently and in partnership with a number of higher education partners. These include Engineering, Advanced Therapies and Spa Management, Health and Social Care and Sports Science.

For more information visit www.gowercollegeswansea.ac.uk

ESOL (English for speakers of other languages)



We offer free* University of Cambridge ESOL Skills for Life accredited courses for the following levels (14 hours per week for 35 weeks):

- Pre Entry
- Entry 1 (Beginner - A1**)
- Entry 2 (Elementary - A2)
- Entry 3 (Pre-Intermediate - B1)
- Level 1 (Intermediate - B2)
- Level 2 (Upper-Intermediate - C1)

* subject to eligibility – contact us to see if you're eligible!

** A1, A2, etc. refer to the Common European Framework of Reference (CEFR)

Entry to courses requires an interview and initial assessment. Call 01792 284450 now to make an appointment.

Contact:

If you require further information about any of our courses, please email the ESOL Curriculum Leader, Kieran Keogh, at kieran.keogh@gowercollegeswansea.ac.uk



International

Gower College Swansea offers a wide range of academic and vocational courses suitable for International students.

We also offer English language courses.

If you require further information about our courses, please contact the International Office on 0044 (0)1792 284007 or email the office at international@gowercollegeswansea.ac.uk

Your Step by Step Guide to becoming a Student

01

Pupils within the City and County of Swansea:

All pupils attending schools within the City and County of Swansea must make online applications for their post-16 choices via the UCAS Progress website www.ucasprogress.com. We will acknowledge applications on this website. All communication from us from then on will be made via email. Please ensure that your email address is filled out correctly in your online application. If you do not have an email address we will correspond with you by post.

PLEASE NOTE THE COLLEGE WILL NOT BE ABLE TO ACCEPT PAPER APPLICATIONS FROM THESE PUPILS.

Pupils from outside the City and County of Swansea and non school leavers:

For all other applicants, you can apply online via our website www.gowercollegeswansea.ac.uk or, if you do not have access to a computer, we can send you a paper application form. We would encourage all applicants to apply electronically via our website.

All communication from us will be via email so please ensure that your email address is filled out correctly. If you don't have an email address we will correspond with you by post.

02 **Interview**

You will be invited to an interview – this may take place at your school or at the college. This is an opportunity for us to get to know you and for you to ask questions about the college. During your interview we are looking for a real interest in the course you are applying for and evidence of commitment to your course, which may include work experience, hobbies and interests.

03 **Enrolment**

You will be given a date and time to come to the college to enrol. Where the offer of a course is conditional on you gaining the relevant entry qualifications you will be invited in following the GCSE results so that your course can be confirmed. Keep your appointment, no matter what your grades! If you don't attend, you are at risk of losing your place. College staff will be happy to talk through your options if you are not completely sure about the course you have chosen.

04 **Induction**

You will come into college for an induction session before the start of term. This is designed to help you settle into the college, meet your tutor and other students on the same course. You will receive your timetable then and be given information to ensure your transition to college is a smooth and happy one.



Student Life

We try and make your college experience as interesting as possible. In addition to your programme of study you can get involved in a range of other activities which not only give you the opportunity to meet lots of new people but also improve your CV for when you apply for a job or move to higher education.

Most recreation and leisure activities take place during lunchtimes, after college or on Wednesday afternoons.

The range of activities include:

- leisure activities such as boxercise, Wii Club, healthy lifestyle tutorials, squash, table tennis and dance
- team sport including football (ladies and men's teams), rugby, netball, volleyball, basketball and cricket
- events (these are just a few!): Freshers Fayre, Diversity Fayre, Global Enterprise Challenge, Student Annual Awards, Inter-faith Conference and the Higher Education Fair
- learner involvement activities including the Student Council, Student Enterprise Champions and focus groups
- Welsh culture including Welsh Club and Mis Cŵl Cymru
- performance opportunities including choir, orchestra, dance performance group, jazz dance, ballet and audition technique
- societies including history, philosophy and current affairs, debating
- fundraising for charity for example Children in Need, Macmillan Coffee Morning, The Kenya Community Education Project and the Mr X Appeal

The Student Council

A Student Council has been developed so that you can have your say about how you would like to see the college improve. As a Class Representative, you can represent the views of the students in your tutor group and make a real impact on the student experience. Each tutor group elects a Class Representative during Local Democracy Week in October.

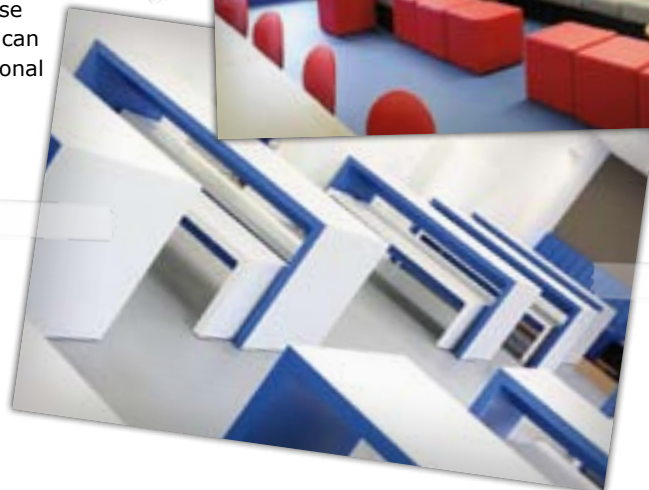
You can also apply to become a Student Governor and sit on the Board of Governors, providing a student perspective on issues discussed by the college's Governing Body.

All students can also become members of the National Union of Students. Membership of the NUS provides benefits including discounts and information on a range of issues, including health and finance.

Enterprise Activities

Enterprise activities develop skills that you will need when you go into the work place or run your own business. Enterprise skills are developed through the tutorial programme, you can become an Enterprise Champion and you can enter a national competition called the Global Enterprise Challenge.

You can find out more about all of these activities (and more) at Freshers Fayre in your induction week.



The Welsh Dimension

Using Welsh in the College

It is the aim of the college to promote a Welsh dimension, nurture a Welsh ethos and support education and culture through the medium of Welsh. We are trying to make the Welsh language a natural part of Gower College Swansea, as it is in some areas of the city. The college Welsh Language Scheme ensures that Welsh is treated as equal to English and that there are opportunities for you to use your Welsh whilst studying and using the college services.

Studying through the medium of Welsh

There are Welsh-medium modules in the areas of Hair and Beauty, Health and Care, and Motor Vehicle (these are highlighted in the course description). The hope is that this will develop in the near future.

Welsh-medium services

We record which language you want to receive our correspondence. Before starting at the college, as a Welsh speaker you will receive your interview in Welsh. In some learning areas there are Welsh-medium tutor groups established, and you can be a part of that.

It is important to remember that you have the right to submit work in Welsh; even if your module is delivered in English, your work can be translated for marking if needed.

There is a peer mentoring training service available to you in Welsh, as well as support, help and the opportunity to develop your study skills as a Welsh speaking learner.

Induction Week

There will be an opportunity to hear about the opportunities available to you as students, in terms of events and activities as well as any academic options, and the service we offer in Welsh.

You can join the Welsh Society during the Freshers Fair. We will be arranging several bilingual events and activities over the year, so that everyone can take part - for example, rugby trips, theatre, gigs, sport training courses, film workshops, rap, competitions, food fair, as well as the usual traditional events like St David's Day and Santes Dwywnwen.

What are the advantages of doing things in Welsh?

- Develop a greater understanding of the subject as, to some extent, you can study it in two languages
- Maintain language skills already developed in school
- Develop cognitive skills
- Develop employability skills as bilingual people are needed in all kinds of jobs.
- Gives a good foundation to any career
- Meeting new people.

If you would like more information on any of these aspects, contact Anna Fflur Davies, the college Bilingual Champion: anna.davies@gowercollegeswansea.ac.uk



If you see this symbol then there are Welsh-speaking staff working in this area.

Information For Parents

Pastoral Support

Pastoral support is one of the strengths of the college and every full time student is allocated a tutor who monitors their academic progress. The college timetables weekly group tutorial sessions to ensure that your son or daughter can talk to their tutor about any concerns about their academic progress. One-to-one sessions are also timetabled so that their individual attendance and academic performance can be discussed.

The Student Code of Conduct

The code of conduct focuses on student behaviour which demonstrates a commitment to their studies and respect for the college community. All students agree to the Student Code of Conduct as part of their enrolment to college. This is monitored through the tutorial system.

Progress Evenings

The college arranges progress evenings so that you can talk to academic staff about your son or daughter's progress. This is done on an appointment basis to ensure that the right member of staff is available for you to talk to. We arrange this through your son or daughter.

How We Communicate With You

As a college committed to reducing our paper use and postage for both environmental and financial reasons, we communicate with parents and guardians using the telephone, through meetings with you and by email. Posting out information will be the exception. Please let us know if we need to communicate with you by post.

The College's Responsibility to Provide Information to Parents and Guardians

Consistent with the Data Protection Act, we must request permission from your son or daughter to share the details on their attendance, progress and behaviour with you. We will do that at the application and enrolment stage. We are not able to ignore an express wish from a learner if he/she does not wish information to be released to their parent(s)/guardians. However, we will do our best to obtain that consent as we feel that this is usually in the best interests of the young person.

MySID – your son or daughter's performance throughout the year

Throughout the year you can access your son or daughter's electronic mySID record, with their permission. You will need to ask them for their user name and password. MySID can be accessed via www.gowercollegeswansea.ac.uk MySID provides information on your son or daughter's attendance and behaviour on a day-to-day basis and their academic reports as they are released. If you have any concerns about your son or daughter after viewing their record you should contact their tutor.

mob.gcs.ac.uk

The college's mobile website can be downloaded onto a smart phone. It contains the latest college news and useful information on college opening times, important dates and funding. After they've enrolled at college, your son or daughter can also register any absences using mob.gcs.ac.uk.

Student Support

Gower College Swansea has a range of support mechanisms to help our students succeed.

Student Services

Student Services is the first contact point for information, support and advice on anything from careers to financial assistance. The college's specialist student support staff are here to help you get the best out of your time at college.

Course Advice and Careers Guidance

The Student Adviser and Admissions Team provide a comprehensive service including impartial, professional and confidential support and guidance to students throughout the application process. Independent careers and education advice is also provided by Careers Wales at Tycoch and Gorseinon throughout the academic year. They can help you with your career choices, mock interviews, developing work skills and looking into employment or university.

Health and Welfare Services

Got a problem? We can help. Students can talk, in a confidential setting, to our welfare officers about anything from academic problems to anger management. Students can also visit the Student Health Advisers if they feel unwell or would like to discuss alcohol, drugs, sexual health and healthy lifestyles in confidence. These staff are also committed to raising health awareness in the college.

Student Support Officers

We have designated Looked After Child, Leaving Care, Young Carer, Mental Health and Homeless Student Support Officers. The College offers support on a one-to-one basis, either short or long term, depending on the need.

Maths and English Support

Literacy and numeracy elements are built into courses to improve students' maths and English skills. The college also offers ad hoc support through study skills.

Additional Learning Support

We provide specialist support for students with additional learning needs or disabilities. If you require specialist equipment or assistance we will apply for funding for this. Let us know at the application stage to ensure we can provide the right support for you.

A range of support can be made available:

- Support worker – one-to-one
- Support worker – small groups
- Specialist support for visually impaired students
- Communication for deaf and hearing impaired students
- Specialist equipment – upon assessment and request
- Material available in large print, tape and Braille

If we know what you need we can make all reasonable adjustments to help you succeed. All disclosures will be treated sensitively. Additional learning resources are also available, such as computers, laptops and educational software to aid literacy.

Tutorial Support

All full time students are allocated a personal tutor to help monitor their academic progress while at college. They are the first point of contact if you need support at any time.

Students also attend group tutorial sessions where they benefit from a structured tutorial programme including visiting speakers, enterprise activities, careers guidance, environmental issues and gain assistance in their UCAS applications.

Oxbridge Preparation Programme

A significant number of our students have progressed to Oxford and Cambridge each year over the past two decades. 10 students received offers in 2013 and 25 have been accepted over the past three years. Our Oxbridge Preparation Programme provides individual programmes for those who wish to apply for leading universities throughout the UK, including Russell Group universities, as well as international institutions.

In year one, individual guidance is provided through the early stages of application. Visits to Oxford and Cambridge and visits by Oxbridge undergraduates and liaison staff are essential elements of the programme. In year two, interview techniques and mock interviews are key elements.



Some of the students progressing to Oxford and Cambridge in 2013

HE+

In addition to our Oxbridge Preparation Programme, Gower College Swansea is the "hub" institution in the Swansea HE+ Consortium, a collaboration between the college, the seven state sixth-form schools in Swansea, and the University of Cambridge. HE+ aims to help students develop academic skills; inspire students to aim as high as possible when making university choices (possibly but not necessarily including Cambridge); support students in preparing competitive applications to highly selective universities; and encourage students to challenge themselves and each other in an academically supportive environment.

Students who are eligible to join our Oxbridge Programme will also be eligible to join HE+. Benefits of HE+ include: monthly extension classes after college on post-syllabus academic content and the chance to apply for visits to explore the University of Cambridge and its constituent colleges. HE+ is currently only available in Wales to students who attend Gower College Swansea or one of the state sixth-form schools in the City and County of Swansea.

Applications for Medicine

Students who have expressed an interest in medicine, dentistry, veterinary medicine or related careers are given weekly tutorial sessions during their second year of study. These provide the opportunity for them to discuss current ethical issues and medical breakthroughs and to receive advice on interview techniques.

The college has strong links with local hospitals and other care providers, enabling students to have first-hand experience of what it means to be a doctor, both in hospital and within the community. Prestigious speakers, including consultants and GPs, regularly visit the college. Former students, who are now qualified and progressing in their careers, also come in to college to provide interview experience and talk to students about their choice of courses.

In 2013, 14 students were accepted to study medicine and one is studying dentistry. The tutor group also included three future vets and ten pharmacists.

Applications to Performing Arts Institutions

Performing arts students are guided through the application procedures for specialist colleges and prepared for auditions.

Moving On

Students are taught by highly-qualified, very experienced specialist staff, many of whom are examiners, and this is reflected in the excellent results which are achieved each year.

The college has well-established links with many higher education providers throughout the UK who welcome our learners as potential students. The vast majority of learners who apply to higher education are accepted and, indeed, the college had a success rate of 75.5% in 2012 (the latest year for which figures are currently available). Around 90% of those students who progressed to higher education gained a place at an institution for which they originally applied, with 15% of our successful applicants attending a Russell Group institution.

Costs and Funding Support

Financial Help

There are a variety of funding streams available to eligible students studying full time at Gower College Swansea. These include the:

- Education Maintenance Allowance
- Welsh Assembly Learning Grant
- Financial Contingency Fund

The funding is designed to support you with your studies and pay for essential course related equipment. Our funding team can help identify what forms of financial help you could be eligible for. Contact them on 01792 284000 or 01792 890700.

Scholarship Programme

Students can also apply to the scholarship programme to gain additional funding to support their studies. The scholarship programme is open to all students applying for further education full time courses at Gower College Swansea. You would need to demonstrate a high level of commitment and achievement e.g. representing your county or Wales. Ask our admissions team for an application form.

Tuition Fees

The college does not charge tuition fees for full time further education (15 hours per week or more) provided to United Kingdom or European Community learners of any age. There are tuition fees for overseas students. Our International Office can advise you of the costs involved.

Additional Costs

All students are required to pay a non-refundable administration fee. On some courses, e.g. hairdressing and catering, there may be additional costs for specialist equipment or clothing. Details will be given during the application and enrolment process.

Students who attend structured work experience as part of their course and require a DBS (Disclosure and Barring Service - previously CRB) check, e.g. for childcare courses, will be charged for the costs of the DBS check.

Transport

Full time students are currently offered a subsidised bus pass.

At Gorseinon campus the college arranges transport for its full time students at the start and the end of the college day. It is the responsibility of parents/guardians to ensure that students are at the designated pick-up points on the transport network by the time agreed.

At Tycoch, Llwyn y Bryn and Kingsway, a First Cymru bus pass is available. The pass can be used from September to the end of the academic year and throughout Swansea and Neath.

A bus is provided for students travelling to the Tycoch campus from Swansea East. The bus route starts in Llansamlet, picking up students in Birchgrove, Trallwn, Winch Wen and Bonymaen, then going directly to the college. The bus leaves Tycoch at 4.35 pm each evening for the return journey. Further information is available at open evenings.



Access

to Higher Education

Levels 2 + 3

Aimed at over
18's wanting
to return to
education



There are Welsh
speaking staff
in this area.

**270 students
successfully completed
Access courses in 2013.
Of these, 231 students
gained places at
university, including:**

- Midwifery - Swansea University
- Physiotherapy and Midwifery - King's College, London
- Clinical Psychology - University of East London
- Paediatric Nursing - Bristol University
- Business - London Metropolitan University
- English - Bath University
- History - Portsmouth University
- Business - Munich University

95%
overall pass rate

Skills for Further Study

Level 2

Agored Cymru Diploma

Gorseinon/Tycoch Campus

Course length: one year

This course is designed for students who wish to prepare for the Access to HE programmes within Gower College Swansea.

This programme is for students who have basic literacy and numeracy needs, as well as lack of confidence for the one year Access programme which, with the introduction of grading in 2009, has become challenging.

What's involved:

The subjects studied on this Level 2 course closely underpin those studied on the Access provision and so allow students to gain an insight and develop a greater understanding of what is required of them before embarking upon the Access at Level 3.

Moving on:

Students will be able to progress to the Access courses upon successful completion or move onto other Level 3 programmes within the college.

Employment and voluntary opportunities may also be enhanced with this Level 2 qualification.

Business

Level 3

Agored Cymru

Tycoch Campus

Course length: one year

The programme is aimed at more mature individuals who have an interest in business and wish to develop the necessary skills to enhance their employment opportunities. At least Level 2 in numeracy and communication skills or equivalent required to undertake this course.

What's involved:

Sufficient credits gained on this programme would enable a student to progress to higher education.

All students will study core modules including:

- Communication skills
- Application of number
- IT
- ECDL (European Computer Driving Licence)

Students will also study business modules including:

- Marketing
- Human resource management
- Business law

Moving on:

Possible progression to higher education in areas such as business studies and finance or to employment in areas such as business and administration.

Counselling Skills

and Psychology

Level 3

Agored Cymru

Tycoch Campus

Course length: one year

The course is a successful programme that prepares mature students or career changers for either the world of work or higher education (either vocational or academic).

What's involved:

The course contains study skill units as well as academically based study to prepare students for higher education within the field of psychology and counselling.

The course supports students through the UCAS application system for entry into higher education institutions throughout the UK and Northern Ireland.

Moving on:

Possible progression to university to study psychology, youth work, social work, counselling and psychology and social science programmes.

Part Time Pre-Access/Access courses also available.

We also offer a range of Higher Education and Foundation courses in partnership with local HE institutions.

See our website for details.

Health Science

Level 3

Agored Cymru

Tycoch Campus

Course length: one year

(12 hours per week)

The Access to Health Science course is a programme that prepares mature students or career changers for either the world of work or higher education, either vocational or academic. The course contains study skill units to develop skills as well as academically based study to prepare students for higher education.

The course supports students through the UCAS application system for entry into higher education institutions throughout the UK and Northern Ireland.

Moving on:

Students will be able to progress to university from this course to study audiology, radiography, paramedics, speech therapy, podiatry, cardiology, or degrees in medical sciences, etc.

Many students, however, do gain employment from this programme, for example laboratory work or health care assistant role within local hospitals etc.

Humanities

Level 3

Agored Cymru

Gorseinon/Tycoch Campus

Course length: one year

This course is aimed at students who are 19 and over, have not attained a Level 3 qualification in the past and are intending to go on to university to study an arts, humanities or social science subject.

What's involved:

Students are introduced to four humanities subject areas: English, history, psychology and sociology. Within each topic, a range of themes and concepts will be considered.

In addition, students are required to achieve core modules in numeracy, communication, IT and study skills, whilst also completing a research project.

No formal entry qualifications are required but communication and numerical skills will be explored during the interview process.

Moving on:

The goal of the course is to develop the skills necessary for study at degree level, progressing onto a degree programme in English, history, sociology, psychology or a related discipline.

Past students have progressed on to careers in teaching, youth and community work, public administration and counselling.

Law

Level 3

Agored Cymru

Gorseinon/Tycoch Campus

Course length: one year

The programme is aimed at more mature individuals and provides the knowledge and skills required to progress to higher education or related employment. The course is recognised by all academic institutions and provides an excellent background for degrees and HNDs in law, criminology and other related subjects. At least Level 2 in numeracy and communication skills or equivalent required to undertake this course. No previous knowledge of law is required.

What's involved:

All students will study the core modules of communication skills, application of number, IT, research skills and customer service skills, as well as law modules:

- Nature of law
- Modern sources of law
- Criminal law
- Contract law
- Tort
- Advocacy and communications
- Mediation
- Civil liberties
- Sex and race discrimination

Moving on:

Possible progression to higher education in areas such as law and criminology or employment in related areas.

Victoria Davies showed determination and focus throughout the Access to Law course, consistently gaining Merits and Distinctions, and is now studying for a Law degree.



Nursing and Health Professions

Level 3

Agored Cymru

Gorseinon/Tycoch Campus

Course length: one year

The course is a successful programme that prepares mature students or career changers for either the world of work or higher education (vocational or academic).

What's involved:

The course contains study skill units as well as academically based study to prepare students for higher education. The course supports students through the UCAS application system for entry into higher education institutions throughout the UK and Northern Ireland.

Moving on:

Possible progression to university health related subjects such as adult nursing, paediatric nursing, mental health nursing, midwifery, audiology, radiography, paramedics, speech therapy, podiatry, ODP, clinical physiology.

Many students gain employment from this programme for example as a social work assistant, health care support worker, youth worker etc.

Science

Level 3

Agored Cymru

Gorseinon/Tycoch Campus

Course length: one year

(14.5 hours per week)

The course is studied over one year and offers direct university entrance to many bioscience related degree courses in the UK. It is aimed at students who are at least 19 years of age and have a strong desire to study a science based subject at university. Although no formal qualifications are required, a Level 2 qualification in Science, or successful completion of the pre-access programme, is desirable.

What's involved:

The course focuses heavily on practical aspects of science and you will spend significant time carrying out modern, exciting industrial laboratory procedures – including genetic engineering.

You will study modules in Biology, Chemistry, Physics and Mathematics, whilst also being required to achieve in the core modules (communication, IT, study skills and research project). Throughout the programme, we will focus on developing the skills, knowledge and understanding which will enable you to be successful in higher education.

Moving on:

The course is ideal for students who wish to progress on to degree or diploma courses in the biological sciences and eventually pursue a career in a science based profession, eg pharmacology, dietetics, radiography, physiotherapy, cardiology and biomedical science.

Past students have progressed on to careers in teaching, youth and community work, public administration and counselling.

Social Welfare/ Social Work

Level 3

Agored Cymru

Gorseinon/Tycoch Campus

Course length: one year

The course is a successful programme that prepares mature students or career changers for either the world of work or higher education (vocational or academic).

What's involved:

The course contains study skill units as well as academically based study to prepare students for higher education. The course supports students through the UCAS application system for entry into higher education institutions throughout the UK and Northern Ireland.

Moving on:

Possible progression to university to study subjects including social work, youth work, criminology, social policy, community studies, psychology and social sciences. Students have also progressed on to a teaching degree. Many students gain employment from this programme including as a teaching assistant.



The dedication shown by Mark Jones to the Access to Nursing course resulted in the achievement of several Merits/Distinctions and two conditional offers from universities - some feat, considering the limited spaces available for Adult Nursing.

A Levels

Level 3

All A Level courses are based at our Gorseinon campus

The college offers some 50 A Level subjects, many of which are 'new' as they are not offered at GCSE.

Take some time to look at all the subjects as you may find something unexpected which will prove to be just the course for you!

In all A Level subjects, the first year of study is known as the AS Level and, generally, external assessment takes place at the end of the first year.

The second year of study is the A2 year and also involves external examinations to gain the full A Level Award.

It may also be possible to start a new AS subject in the second year of study.

Contents

Art and Design	18
Business	19
Computing and Technology	20
Engineering	21
Health and Childcare	22
Humanities	22
Languages	24
Maths, Science and Social Science	27
Media	31
Performing Arts and Music	32
Sport	33



A-Z	Page
<input type="checkbox"/> Accounting	19
<input type="checkbox"/> Ancient History	22
<input type="checkbox"/> Archaeology	22
<input type="checkbox"/> Art and Design: Textile Design (Fashion/Interior Design)	18
<input type="checkbox"/> Biology	28
<input type="checkbox"/> Business Studies	19
<input type="checkbox"/> Chemistry	28
<input type="checkbox"/> Classical Civilisation	23
<input type="checkbox"/> Computing	20
<input type="checkbox"/> Dance	32
<input type="checkbox"/> Design and Technology: Product Design	21
<input type="checkbox"/> Drama	32
<input type="checkbox"/> Economics	20
<input type="checkbox"/> Electronics	21
<input type="checkbox"/> English Language	24
<input type="checkbox"/> English Language and Literature	25
<input type="checkbox"/> English Literature	25
<input type="checkbox"/> Environmental Studies	29
<input type="checkbox"/> Film Studies	32
<input type="checkbox"/> Fine Art	18
<input type="checkbox"/> French	25
<input type="checkbox"/> Geography	30
<input type="checkbox"/> Geology	29
<input type="checkbox"/> Government and Politics	23
<input type="checkbox"/> Graphic Communication	18
<input type="checkbox"/> Health and Social Care	22
<input type="checkbox"/> History	23
<input type="checkbox"/> Human Biology	29
<input type="checkbox"/> Information and Communication Technology	21
<input type="checkbox"/> Law	20
<input type="checkbox"/> Mathematics/Pure Mathematics	27
<input type="checkbox"/> Mathematics Double Award	27
<input type="checkbox"/> Media Studies	31
<input type="checkbox"/> Music	33
<input type="checkbox"/> Music Technology	33
<input type="checkbox"/> Philosophy	24
<input type="checkbox"/> Photography	19
<input type="checkbox"/> Physical Education	33
<input type="checkbox"/> Physics	30
<input type="checkbox"/> Psychology	30
<input type="checkbox"/> Religious Studies	24
<input type="checkbox"/> Sociology	31
<input type="checkbox"/> Spanish	26
<input type="checkbox"/> Spanish (GCSE – Level 2)	26
<input type="checkbox"/> Welsh (Second Language)	27
<input type="checkbox"/> World Development	31

Entry Requirements

Seven GCSEs at grade C, preferably including English and Maths. If this has not been achieved at school, a commitment to enrol on GCSE Maths and English at college will be required if it is your intention to go on to higher education.

Certain subjects/courses may require specific GCSEs at grade C or above and these are indicated within subject information (visit our website for further details - www.gowercollegeswansea.ac.uk).

Where entry requirements are not met, but there are special circumstances, each application will be considered on individual merit.

GCSE Re-sits

Students will be strongly encouraged to re-sit GCSE English, Mathematics, Science and Welsh (First Language), where required, and provision is made for these subjects to be studied within the first year of their course.

Examinations will usually be sat at the end of the first year of study.

2013 A Level Results

Subject	Entries	A*%	A*-C %	A%-E%
Accounting	36	8%	83%	97%
Ancient History	10	0%	60%	90%
Biology	131	6%	74%	97%
Business Studies	93	1%	84%	100%
Chemistry	108	12%	94%	100%
Classical Civilisation	18	6%	78%	100%
Computing	17	0%	41%	94%
Dance	18	0%	89%	100%
Design and Technology: Product Design	10	0%	30%	90%
Drama	30	3%	93%	100%
Economics	33	3%	82%	100%
Electronics	8	0%	100%	100%
English Language	37	0%	84%	100%
English Language and Literature	71	8%	96%	100%
English Literature	33	3%	82%	100%
Environmental Studies	14	0%	71%	93%
Fine Art	29	10%	69%	86%
French	28	4%	82%	96%
Geography	79	6%	89%	99%
Geology	25	8%	84%	100%
Government and Politics	20	0%	65%	95%
Graphic Communication	23	26%	74%	91%
Health and Social Care	12	0%	75%	100%
History	57	2%	88%	100%
Human Biology	30	3%	70%	93%
ICT	43	2%	65%	95%
Law	64	14%	78%	94%
Mathematics	153	12%	86%	96%
Mathematics: Further	22	27%	91%	100%
Mathematics: Pure	10	10%	70%	100%
Media Studies	21	0%	48%	95%
Music	19	0%	84%	100%
Music Technology	22	0%	36%	86%
Philosophy	16	0%	75%	88%
Photography	35	0%	94%	100%
Physical Education	23	0%	30%	87%
Physics	39	3%	56%	95%
Psychology	128	1%	83%	100%
Religious Studies	19	5%	84%	100%
Sociology	63	11%	87%	97%
Spanish	9	11%	89%	100%
Textiles	17	6%	65%	94%
Welsh (Second Language)	9	0%	89%	100%
World Development	16	6%	94%	100%

97%
overall pass rate

80%
A*-C overall pass rate

Art and Design

Art and Design: Textile Design (Fashion/Interior Design)

Course length: two years

The course aims to nurture creativity and personal strengths through independent study.

What's involved:

The 'design process' and its development is an essential part of the course, therefore workshops in mark-making, colourwork and design process skills are covered. Students will use a variety of decorative techniques, such as hand printing, embroidery and hand dyeing. Fabric construction, manipulation and embellishment will also be covered. Students are encouraged to explore the use of both traditional and non-traditional materials, such as plastic, wire and paper, and to research and study the work of other artists, designers and craft persons (both contemporary and historical).

Students on this course will also be able to gain additional City & Guilds qualifications which complement the A Level programme. To cope with the practical demands of the textiles course it is highly recommended that students work towards the City & Guilds Certificate in Sewing Machine Techniques qualification. The City & Guilds Level 2 Certificate in Pattern Cutting, which is also available within the course, will provide students with a stimulating new skill which can contribute to successful completion of the A Level.

Please note that there is a studio fee of £25 for this course.

Moving on:

A Level Textile Design opens many doors and can be fundamental in creating pathways for a whole array of university courses/Art and Design Foundation. A graduate of textiles could follow a career in fashion, surface pattern design, interior design, film/theatre costume design, fashion promotion/journalism, teaching or become a specialist textile artist/designer in textile jewellery, felt-making, printing, etc.

Fine Art

Course length: two years

The course is a practical exploration of traditional and contemporary practice within fine art and encourages learners to develop their own skills and direction within the broad definition of the subject.

What's involved:

Students are encouraged to learn from the work of others and to develop this knowledge within their own personal explorations.

A full range of diverse practice is encouraged and all students are expected to challenge themselves within a wide spectrum of materials, techniques and processes.

At least one GCSE pass must be an art and/or design subject.

Please note that there is a studio fee of £25 for this course.

Moving on:

Students successfully passing the A Level Fine Art course will normally progress to higher education via the traditional route of an extra year of the Foundation Course in Art and Design or may be accepted directly onto a degree in fine art/art and design.

Graphic Communication

Course length: two years

Why choose graphic communication?

This subject area allows students, whatever their background or interests, to get involved with the 'creative process'.

An art based GCSE at grade C is recommended, although not essential.

What's involved:

The course provides opportunities to develop personal responses to ideas, observations, experiences, environments and cultures in practical, critical and contextual forms.

Candidates will produce practical and critical/contextual work in one or more areas including: illustration, advertising, packaging design, design for print, communication graphics, computer graphics, multimedia, animation, web design, film, television and/or video. The flexibility of the AQA Graphic Communication specification allows students to work from their strengths.

Please note that there is a studio fee of £25 for this course.

Moving on:

Successful students could use this qualification to gain access to further study in a variety of areas, such as graphic design, art and design, media design, multimedia design, film and video, advertising, design management and many other areas within the ever-expanding graphic communication world. This specification lays an appropriate foundation for further study of art and design or related subjects in higher education. In addition, it is suitable for the diverse range of candidates who wish to develop their interest in and enjoyment of art and design.



Photography

Course length: two years

The course is designed to introduce learners to the creative field of photography.

What's involved:

Learners will develop skills and an understanding of location image making, as well as using our well-equipped studio to produce high quality professional images. Photographic practical experience will be supported by an understanding of technical applications, including traditional film and digital photography.

Although potential learners may not possess a formal qualification in photography, it is useful to have a creative background, e.g. art or graphics at GCSE, although this is not essential.

Please note that there is a studio fee of £25 for this course.

Moving on:

Successful candidates can progress onto foundation or degree level courses, or perhaps gain employment in the media and photographic industry.

Accounting

Course length: two years

Accounting teaches the student how to manage the finances of a small or large business. It appeals to those who are numerate, have a methodical mind and enjoy the logic of figures.

What's involved:

The course is delivered through a variety of teaching methods. Team and group work is encouraged and independent study is essential. The course is of a practical nature and the class atmosphere is lively, with a great deal of student participation. Work is all based on real-life situations, which call for accuracy and the ability to handle a large volume of information.

Areas studied within this course include:

- Financial accounting
- The preparation and interpretation of financial accounts
- Costing and accounting for control
- Investment and financial decision-making

Moving on:

AS/A Level Accounting combines well with other subjects, such as business studies, economics and law. It can lead to a degree in accounting, or accounting and finance, or combined degrees, such as accounting law or accounting and management.

Business Studies

Course length: two years

Business studies is a valuable subject whether you take just the Advanced Subsidiary or the full A Level. No previous knowledge of the subject is required - you do not need to have taken the subject at GCSE. However, some parts of the course require an element of confidence with numeracy so a C grade or above in GCSE Maths is recommended.

What's involved:

The course looks at the decisions that have to be taken by the managers in all organisations (both private businesses and those controlled by the Government). Today's A Level students are the managers of tomorrow. No matter what your chosen career an understanding of business studies will be useful.

We also look at the issues involved in setting up and running your own business.

The behaviour of a wide variety of organisations will be investigated in terms of their ability to meet society's needs and wants and also the ethical dilemmas and responsibilities they face. Throughout the course, students will be encouraged to generate enterprising and creative solutions to business problems and issues.

Moving on:

There is no limit to the career areas that business studies is applicable to. Even in many public sector institutions, such as education and the NHS, organisations are increasingly having to act in a business-like fashion so an understanding of business concepts and theories is valuable to all career-minded A Level students. Some of our students are already clear that they want to set up their own business one day but most end up as managers in a wide range of environments.

A large number of our students go on to study the subject at university because they realise how valuable this will be to their future.



Business (continued)

Economics

Course length: two years

Economics is the study of the ways in which Man organises the use of resources to achieve the goods and services which he needs to survive and prosper, from the basics of food, clothing and shelter, to computers, air travel, education, etc.

GCSE Maths grade C or above is recommended. No previous knowledge of economics/business studies is required.

What's involved:

The course will deal with economic questions which are in the news today, such as the single European currency, the minimum wage, the crisis in agriculture, the role of Government in the economy, etc. This makes it an interesting, topical subject, where the pros and cons of alternative policies can be discussed. The gathering of information from newspapers, television and the internet will be a requirement of the course.

Moving on:

There is hardly a field of human endeavour where the application of economic principles is not relevant. A qualification in economics is valuable in any career and invaluable in specific occupations. Students considering reading PPC at Oxford should consider taking economics, at least to AS Level. There is an increasing need for economists in commerce and industry generally: in market research, central and local government departments, banking, the media, journalism, etc.

Many professions, such as managers, accountants and bankers, sit economics papers as part of their professional examinations. Business studies/management studies at university level have substantial economics content.

Law

Course length: two years

The course encourages students to develop an interest and understanding of law and selected areas of the legal system in England and Wales.

What's involved:

The changing nature of law in society will be considered, as will the rights and responsibilities of individuals as citizens.

Study units include:

- Understanding legal values, structures and processes
- Understanding legal reasoning, personnel and methods
- Understanding substantive law: freedom, the state and the individual
- Understanding law in context: freedom, the state and the individual

No prior qualification in law is required to follow this course.

Moving on:

Law is a valuable qualification for many careers and a considerable number of professions have a legal content in their training e.g. banking, business, accountancy and journalism. Other opportunities include qualifying for the legal profession as a solicitor or barrister.

The majority of students progress to study law at university, although criminology is an alternative choice. Popular destinations include Cardiff, Swansea, Oxford, Cambridge, King's College and the London School of Economics. Past students often report back on the advantage they have at university over their contemporaries who have no legal background.

Computing and Technology

Computing

Course length: two years

What's involved:

The areas studied within this course are contained in four modules, comprising one theory and one practical coursework module in each year of study. Work can be undertaken on both Mac and Windows platforms. Topics include:

- Computer programming
- Creating computer software, e.g. database programming, games programming, app development
- Representing data in the computer
- Security
- Data types and data structures
- File organisation and database systems
- Methods of solving standard problems
- Producing structured solutions to computer problems
- System design and analysis
- Algorithms
- System testing
- System software
- Computer systems architecture
- Communications

B grade at GCSE Mathematics is recommended to undertake this course.

Moving on:

Progression to a university course. As computer programmes and applications are an integral part of every aspect of modern life and because of the many transferable skills developed, this subject is suitable for study in combination with many other subjects, both at A Level and in higher education.

The skill set developed will benefit any career. Computer science graduates particularly are in great demand and command high salaries.

Engineering

Information and Communication Technology

Course length: two years

What's involved:

The course consists of four units, two will be studied for AS and two for A2.

- Practical problem-solving in the digital world - students develop their knowledge and understanding of the development of ICT systems through practical experience, using a range of applications software.
- Living in the digital world - this unit is designed to give students the wider picture of the use of ICT and to enable the understanding of basic terms and concepts.
- The use of ICT in the digital world - this unit looks at the fast-changing subject of ICT, including developments in technology and ICT system capabilities.
- Coursework - practical issues involved in the use of ICT in the digital world. Students complete a substantial project involving the production of an ICT-related system.

Moving on:

Competition for IT graduates has placed them above lawyers and engineers in commanding high salaries. Many large companies are recruiting IT graduates actively and there are excellent opportunities to work abroad.

Design and Technology: Product Design

Course length: two years

The aims of this course are to develop creativity in design and establish a firm foundation in technical knowledge.

What's involved:

This is both a practical and theoretical course. In addition to the A Level qualification students will gain an NVQ in workshop skills.

Students will develop their creativity by investigating, designing and making products. This will be achieved through a number of smaller tasks in year one, developing to a full design and manufacture project in year two. Students will be given the opportunity to focus on areas that relate to their chosen career.

Moving on:

This course provides an excellent foundation for a wide range of degree or HND courses. When studied with maths or science, students can progress to careers in architecture, aerospace, mechanical, civil or materials engineering, computer aided design, industrial design, production design or 3D design. When joined to art-based A Levels, a more art-based career may be pursued.

Students have progressed to study animation in Bournemouth, architecture at Bath University, aerospace engineering in Bristol and Swansea, medical science in Cardiff and product design in Loughborough and Swansea.

Electronics

Course length: two years

The course covers both academic and practical elements and is divided into a total of six units: three AS units and three A2 units.

A pass at GCSE in Science and/or Maths is required to undertake this course.

What's involved:

At AS Level you will study digital and analogue systems, circuits and components and programmable control systems project.

At A2 Level you will study communications systems and systems applications, the final module being the design project where you will design and test an electronic system.

Moving on:

This course allows progression to higher education or vocational electronics training via an apprenticeship and will provide a firm foothold for students wishing to study electronics or engineering.

Tim Johnston receiving the Outstanding A Level Student of the Year – Services to Industry and People award for the quality of his work on the Design and Technology (Resistant Materials) course. The brief was to create a shelter for victims of natural disasters and the project was selected for the 2013 Innovation Awards. Tim also studied A Level Business Studies and Physics and is now studying for a degree in Business Management.



Health and Childcare

Health and Social Care

Course length: two years

What's involved:

The GCE in Health and Social Care allows students to build skills as well as technical knowledge. It provides a broad base of understanding, while allowing students to also focus on the following specialist areas:

- Rights, responsibilities and values
- Communication in care settings
- Health and wellbeing
- Service provision and practitioner roles

Moving on:

This course gives students a wide choice of progression options into further study, training or employment. Successful completion equips students to move on to a degree course, including nursing, midwifery, social work and medical sciences. It will also give access to Level 5 BTEC Higher National Diploma or QCF courses.

Humanities

Ancient History

Course length: two years

This course is designed to study the history and culture of Ancient Greece and Rome.

It is recommended that students have at least a B in GCSE History (if GCSE History has not been taken, a C grade in English is expected).

What's involved:

At AS you will study these topics, using original sources from the ancient world:

- Politics and society of ancient Sparta
- Augustus and the Principate

You will learn how to use this evidence, understanding issues of reliability and interpretation.

At A2 you will study Greek and Roman history under the theme of conflict and culture:

- The Culture of Athens 499-399BC
- The Invention of Imperial Rome 31BC-96AD

You will build on skills developed at AS, with a focus on the investigation of historical themes.

Moving on:

The subject nurtures the personal transferable skills of problem-solving, analysis, disciplined argument and persuasive presentation, which employers value highly. Its study is proof of intelligence, commitment and an ability to think creatively. All these skills will be sought by university admissions tutors and employers. It is also an excellent subject to support study in other areas, such as modern history, law, English, philosophy and politics. Universities to which students typically progress include Swansea, Lampeter, Bristol, Exeter, Reading, UCL and King's.

Archaeology

Course length: two years

Archaeology is the study of past human societies from the investigation of material remains. It is one of the most exciting subjects in the curriculum. Archaeology is the ultimate subject for an 'all round' student, in that it combines elements of many other academic disciplines, such as science, art, technology, geography, history, sociology and religious studies.

What's involved:

The programme of study is as follows:

AS outline:

This specification introduces candidates to the world of archaeology and archaeologists:

- Unit 1: The Archaeology of Religion and Ritual
- Unit 2: Archaeological Skills and Methods.

A2 outline:

The specification provides opportunities for critical thinking and independent study. Candidates consider further key themes in world archaeology, including a focus on contemporary archaeological issues, and will undertake an archaeological investigation:

- Unit 3: World Archaeology
- Unit 4: Archaeological Investigation

A grade B in GCSE Science is desirable for entry to this course.

Moving on:

Archaeology is a very respected academic course, which has grown in popularity over recent years. All universities respect the qualification. Post A Level students can progress on to study archaeology at a range of higher education institutions including Russell Group universities.

Classical Civilisation

Course length: two years

Classical Civilisation is the study of the cultures of ancient Greece and Rome, primarily through their literature. Their literature is very much connected with their cultural identity - their gods, myths and legends, which they viewed as their true history.

What's involved:

Topics studied at AS:

- Aristophanes and Athens – three plays by the comic playwright Aristophanes
- Homer's Iliad – the epic poem set at the time of the Trojan War

Topics studied at A2:

- Greek Tragedy – four plays examining the dark and traumatic realms of the ancient Greek mind
- Roman Epic – Virgil's epic poem, The Aeneid

Moving on:

Students make successful careers in the mainstream of commerce, law, finance and public administration, as well as in more directionally vocational fields such as teaching, archive and museum work and conservation.

Universities to which students typically progress include Swansea, Lampeter, Bristol, Exeter, Reading, UCL and King's.

Government and Politics

Course length: two years

What's involved:

The AS Level examines British government and politics. Students study voting behaviour, electoral systems, political parties, our representative institutions and how we are governed.

The second year focuses on the unique political system of the United States. Topics include the electoral process, use of direct democracy, the US Constitution, Congress and the Presidency.

To support the AS programme we have recently introduced a visit to London and intend to offer an overseas trip to the United States to compliment the A2 subject content.

Lectures involve numerous activities, debates and discussions on political concepts/theories and the important issues of the day. Government and Politics students must meet normal A Level entry requirements and have at least a C grade in English but a B grade is desirable. Students will need to be enthusiastic, with an interest in news and current affairs essential to gaining a good grade in the subject.

Moving on:

Many students go on to take degree courses such as politics or international relations. Students that have taken the course have gone on to study at highly regarded institutions such as Aberystwyth, Bristol, Cardiff, King's College London, LSE and Swansea.

Students who study government and politics generally pursue careers in a wide range of areas, including the civil service, local government, journalism, social work, banking and financial institutions, law, police, armed forces, business and industry. Knowledge of government and politics is very useful in a wide variety of fields.

History

Course length: two years

History is the study of the past and how it has been interpreted, involving research, analysis and argument. Concepts of cause, consequence, continuity and change help students understand the past.

It is recommended that students have at least a B in GCSE History (if GCSE History has not been taken, a C grade in English is expected).

What's involved:

Students study an outline course on modern Welsh and English history c1780-1886, focusing on political and economic developments of the era.

The second (in-depth) course is an European study, either Nazi Germany c1933-1945 or the French Revolution c1774-1795. Students of Germany examine Nazi government, foreign policy, and the Second World War. The French Revolution covers political and constitutional changes in the period, then the Counter Revolution and its defeat.

Moving on:

Success at A Level History can lead to entry at higher education and is a useful qualification for employment in fields such as administration and management, public relations, teaching, librarianship, archive and archaeological work, museums and galleries, law, journalism and the media. Typical university destinations for history are Aberystwyth, Swansea, Cambridge, University of London, Exeter, Warwick and Bristol.



There are Welsh speaking staff in this area.

Humanities (continued)

Philosophy

Course length: two years

In philosophy we think about fundamental questions about life, religion, science, ethics and politics. It is a subject with a very long history. Although you might not have come across philosophy in your secondary school education, many philosophical questions are not difficult to understand.

What's involved:

At AS we study two units and four themes:

- Introduction to philosophy 1:
 - Reason and experience
 - Why should I be moral?
- Introduction to philosophy 2:
 - Free will and determinism
 - The value of art

At A2 we progress to study key themes in philosophy:

- Political philosophy
- Epistemology and metaphysics
- Philosophical problems
- Nietzsche - 'Beyond Good and Evil'

Moving on:

Philosophy is invaluable for many careers which involve the development of rational argument, standards of justification and discourses around truth. Philosophy has been a basis for careers such as law, journalism and teaching. The course encourages the development of useful skills that will enhance career or higher education prospects.

Religious Studies

Course length: two years

It makes no difference if you are a theist (believer in God), atheist (non-believer in God) or agnostic (undecided about God), Religious Studies could offer you an interesting and vibrant option at both AS and A Level with plenty of opportunities for thought-provoking religious, ethical and philosophical debate.

What's involved:

We look at issues relevant to the changing modern world, such as war and genetic engineering, from the perspectives of religious believers as well as moral philosophers. We study one world religion in depth and evaluate its relevance today for believers and nonbelievers.

Grade C in religious studies, if taken at GCSE as a full option or for short course, is required.

Moving on:

Religious studies is regarded as a serious academic subject which serves as an entry qualification to all courses requiring A Level passes. Religious studies helps to develop tolerance and understanding of humanity, useful for any jobs working with people.

A degree in religious studies can lead to a variety of careers such as teaching, social work, journalism, nursing, PR and youth work. Students who have completed the course have gone on to various universities including Swansea, Cardiff, Bristol, London, Trinity St David, Cambridge and Bath Spa.

Languages

English Language

Course length: two years

This subject builds on many of the skills acquired in GCSE English.

What's involved:

The main areas of study at both AS and A Level are:

- analysing a range of texts (both written and spoken) using the frameworks that underlie language in use. The most important of these frameworks is grammar.
- writing different kinds of texts to suit different audiences and situations
- responding to issues in language, including the history of the language.

There will be opportunities to explore further areas of language use that interest you and to develop creative writing skills.

GCSE C grades in English Literature and English Language are required to undertake this course.

Moving on:

A Level English Language is invaluable for future journalists, teachers and anyone who has an interest in using words with confidence. The course encourages the development of useful skills that will enhance career or higher education prospects: essay writing technique will improve as well as your ability to express yourself orally. However, perhaps more importantly, we hope that you will also develop a lifelong fascination with words, reading and discussing ideas.

Former A Level French student, Bethan Rees, is now studying Modern Languages and European Studies at the university of Bath: "Confidence is definitely half the battle when you study languages, and I think studying at Gower College Swansea did the world of good for boosting my confidence."



English Language and Literature

Course length: two years

English Language and Literature at AS/A Level builds on the skills gained at GCSE and requires you to study a range of texts, both literary and non-literary.

What's involved:

You will learn a range of linguistic and literary terms which will help you analyse and comment on grammar and sentence structures as well as meaning and impact within texts. The course consists of four modules, two at AS Level and two at A2 Level. In both years there is one examination (60%) and a coursework module (40%).

GCSE C grades in English Language and English Literature are required to undertake this course.

Moving on:

Either A Level English Literature or A Level English Language and Literature are essential for those who want to read English literature at a higher level, but are also invaluable for future journalists, teachers and anyone who has an interest in using words with confidence.

English Literature

Course length: two years

English Literature at AS and A Level builds on the skills gained at GCSE and encourages you to look more closely at different texts and to make connections between them.

What's involved:

You will be introduced to some of the interesting contextual factors that shaped the writing and the different readings of texts.

At AS you will study a minimum of six texts, covering a range of periods and genres, including modern poetry and drama and a range of prose texts.

At A2 you will study poetry written before 1800 and a Shakespearean text.

GCSE C grades in English Literature and English Language are required to undertake this course.

Moving on:

Either A Level English Literature or A Level English Language and Literature are essential for those who want to read English literature at a higher level, but are also invaluable for future journalists, teachers and anyone who has an interest in using words with confidence.

The course encourages the development of useful skills that will enhance career or higher education prospects: essay writing technique will improve as well as your ability to express yourself orally. However, perhaps more importantly, we hope that you will also develop a lifelong fascination with reading and discussing ideas.

French

Course length: two years

Improving communication in French is one of the main aims of the course. Therefore, grammar teaching plays a key role in confidence building.

What's involved:

The first year of study builds on existing skills of listening, speaking, reading and writing and students are encouraged to express their own opinions on a wide range of interesting topics from popular culture to healthy living and the family, while gaining an insight into another culture.

Studying aspects of French cinema is a key element of the second year of study. The exposé offers students the opportunity to embark on personal research. Translation practice is a challenging but rewarding part of the second year and provides excellent preparation for university.

GCSE profile to include French at grade C, although grade B is highly recommended.

Moving on:

Many of our students continue their study of languages at university and can look forward to careers in translating, interpreting and teaching.

Being able to speak a language increases a student's employability because language students typically combine academic qualifications with a range of other skills, including excellent oral and written communication skills, independence and self-confidence.

Among the universities that students have progressed to are Cardiff, Swansea, Bristol, Bath, Exeter, London (King's, UCL, University of London Institute in Paris) and Oxford.



One of our past A Level French students, Lottie Myers, is currently studying on the innovative Cardiff-Bordeaux Joint Degree/Diploma which will allow her to obtain the BSc (Econ) in Politics from Cardiff University, as well as the Diploma from the prestigious Sciences Po in Bordeaux (one of nine Instituts d'Études Politiques in France).

Languages (continued)

Spanish

Course length: two years

Spanish is now one of the world's most widely spoken languages with over 400 million speakers.

The AS and A2 courses advance the existing skills of reading, writing, speaking and listening gained at GCSE level.

What's involved:

Topics studied include leisure, lifestyles and the individual and society. With AS and A2 Level, in addition to covering the environment and social and political issues, there is also the opportunity to study Spanish and Latin American film.

All language students enjoy the support of a native speaker for oral and general linguistic skills. Students are encouraged to use the internet for research and to use the many online resources which are now available for Spanish.

GCSE profile to include a grade C in Spanish (for beginners in Spanish, GCSE can be studied in Year 1 of the course with an intensive second year covering AS and A level Spanish).

Moving on:

Many of our students continue their study of languages at university and can look forward to careers in translating, interpreting and teaching.

Among the universities to which students have progressed are Oxford, Cardiff, Swansea, Bristol, Bath and Exeter.



Former student Danny Rees is now studying French and Spanish at St Anne's College, Oxford and has been travelling in Bolivia to enhance his language skills: "The thorough and in-depth way both grammar and language were taught stood me in very good stead for university, as well as the oral practice I had with native speakers for both French and Spanish. All my lecturers were more than happy to help with any questions I had during my two years and provided me with lots of extra reading material and language work to keep me occupied."

Spanish GCSE (Level 2)

Course length: one year

This is an ab initio course so no previous knowledge of Spanish is necessary, although it is an advantage to have studied French.

What's involved:

The Spanish GCSE course tests the skills of reading, writing, speaking and listening. Topics studied include home life, home town and region, education, the environment, youth culture and the media.

Spanish is spoken by over 400 million people (only Mandarin boasts more speakers). This is a great opportunity to add a new language to your skills and enhance your CV. ¡Buena suerte!

Moving on:

Students are given the opportunity to study the language to AS or A Level. This involves a high level of commitment but, in the past, excellent results have been achieved and many ab initio students have gone on to study Spanish to degree level.

Maths, Science and Social Science

Maths:

Welsh (Second Language)

Course length: two years

Welsh (Second Language) GCSE grade C (full course OR short course) required to undertake this course.

What's involved:

AS (first year) - three compulsory units are studied:

- Film, multimedia Welsh culture - oral
- Written coursework
- The use of language and poetry - written

A Level (second year) – three compulsory units are studied:

- The play 'Siwan', multimedia in Wales
- Short stories and formal letter writing
- The use of language and poetry

Moving on:

Studying Welsh at higher education. Employment opportunities include the civil service, media in Wales, health and care services or police.

Mathematics/Pure Mathematics

Course length: two years

To undertake A Level Mathematics, a minimum grade B in GCSE Mathematics at higher level is required. For A Level Pure Mathematics, a minimum grade A is required.

What's involved:

At AS, students study core mathematics (C1 and C2) and choose from either mechanics (M1), statistics (S1) or core mathematics (C3) to qualify for one of the following:

- AS Mathematics (C1, C2 and M1 or C1, C2 and S1)
- AS Pure Mathematics (C1, C2 and C3)

At A2, students study core mathematics (C3 and C4) and choose from either mechanics (M2) or statistics (S2) or M1 or S1.

A2 Pure Mathematics students will study C4, FP1 and FP2. Students will qualify for one of the following, based on the combination of modules taken over the two years of the course:

- Advanced Level Mathematics
- Advanced Level Pure Mathematics

Moving on:

Successful students can progress to higher education.

Mathematics Double Award

Course length: two years

Grade A in GCSE Mathematics is required to undertake this course.

What's involved:

To qualify for the A Level Double Award, students have to study six modules in year one: C1, C2 and C3 and either M1, M2 and M3 or S1, S2 and S3.

In year two they study another six modules: C4, FP1 and FP2 and either M1, M2 and M3 or S1, S2 and S3.

Students qualify for two awards:

- Advanced Level Mathematics and
- Advanced Level Further Mathematics.

Students who have already completed an A Level in mathematics can study for AS Further Mathematics by taking FP1 plus two other modules from the following: FP2, FP3, S1, S2, S3, M1, M2 or M3, depending on the modules already undertaken for A Level Mathematics.

Moving on:

Successful students can progress to higher education to read mathematics in any reputable university.

Science:

Biology

Course length: two years

GCSE grade B in double or triple science (higher tier), English and maths required to undertake this course.

What's involved:

The syllabus is divided into six units:

AS

Unit 1: Basic biochemistry and cell organisation - written paper (20% total marks)

Unit 2: Biodiversity and physiology of body systems - written paper (20% total marks)

Unit 3: Practical assessment - experimental work at centre, marked externally (10% total marks)

A2

Unit 4: Metabolism, microbiology and homeostasis - written paper (20% total marks)

Unit 5: Environment, genetics and evolution - written paper (20% total marks)

Unit 6: Experimental work at centre - externally marked (10% total marks)

Moving on:

Many students use this subject as a platform for entry into medicine, dentistry and veterinary science. Other degree courses that are available to biology students include pharmacy, biomedical sciences, radiography, optometry, nursing and many other health-related careers.

Biological science degrees can lead to a career in research, genetics, forensics and public health. There are many environmental degree courses on offer. Some students combine biology with other subjects in order to study psychology, law or journalism.

Chemistry

Course length: two years

Minimum GCSE grade B in maths, English and double or triple sciences (higher tier) required to undertake this course.

What's involved:

The exam board is WJEC and you will be required to sit two examinations at the end of both Year 1 and Year 2. In addition, there are two externally assessed practicals for both AS and A2.

At AS, topics include atomic structure, chemical equilibrium, chemical calculations, energetics and kinetics, chemical bonding, shapes of molecules, solubility of compounds, solid structures, periodic trends, organic reactions, hydrocarbons, halogenoalkanes, alcohols and analytical techniques.

At A2, topics include spectroscopy, isomerism and aromaticity, organic compounds containing oxygen, alcohols and phenol, aldehydes and ketones, carboxylic acid and derivatives, organic compounds containing nitrogen, organic synthesis and analysis, redox and standard electrode potential, chemical kinetics, enthalpy changes for solids and solutions, entropy and feasibility of reactions and equilibria.

Moving on:

A Level Chemistry is a compulsory requirement of many higher education courses including medicine, dentistry, veterinary science and pharmacy. Most of these courses are now asking for a grade A or A* in A Level Chemistry.

Olympians

A Level students from Gower College Swansea have again successfully competed in the annual Chemistry Olympiad. The students sat a two hour examination with questions set by the Royal Society of Chemistry. "The questions are pitched beyond A Level, often covering unfamiliar topics that we haven't yet taught in class," said lecturer Paul Mouncher. "Not one student threw in the towel so I am incredibly proud of them. It was a voluntary challenge and represents a considerable achievement for them all."

Thomas Grove was presented with a Silver Medal by the Royal Society of Chemistry. Tom Chess received a Bronze Medal and Rachel Anderson, Shivani Birla, Kelli-Jo Davies, Melissa Gatley, David Hughes and Sophia Lewis all received certificates.

Rachel Anderson receiving the Outstanding A2 Student of the Year - Arts & Sciences - award for the quality of her work and results. She studied Chemistry, Biology, Maths and Spanish and is now reading Medicine at Cambridge.



Environmental Studies

Course length: two years

This is a wide-ranging and interesting course that focuses on important issues such as air and water pollution, the use and misuse of natural resources, climate change, wildlife conservation and sustainability.

It is recommended that GCSEs include science(s) at grade C.

What's involved:

The course centres on understanding the way that different natural cycles and events within the environment work, how human beings are making an impact on these processes and what can be done to minimise the resulting problems.

The course requires some basic knowledge of chemistry, biology and physics and builds on this to give students a knowledge base from which to discuss key environmental issues.

Moving on:

There are many higher education courses directly related to environmental studies, such as environmental science, environmental risk management, pollution science, wildlife conservation and environmental chemistry. Many other subjects have links with environmental studies, such as geography, climate science, planning and civil engineering.

Jobs in the area of environmental science are rewarding and highly valued.

Geology

Course length: two years

Geology is the science of the Earth. It studies minerals, rocks and fossils to understand how the earth works today and has worked over its long history.

What's involved:

This knowledge is applied both in studying natural hazards, such as earthquakes, volcanoes and tsunamis, and in finding vital resources like oil, coal, water and metals. Geology is a science that applies a range of physical, chemical and biological principles to work out past environments and events and to predict underground structures, such as folds and faults.

It is recommended that GCSEs include science(s) and maths at grade C or above.

Moving on:

Geology or earth science degree courses are offered by many universities. Please note that many of these require maths A Level and some, such as Oxford or Cambridge, physics or chemistry A Levels.

A geology degree is widely valued as a preparation for many other careers. Geology or earth sciences also play a vital role in biology, environmental science, geography engineering and oceanography.

Human Biology

Course length: two years

GCSE grade B in double or triple science, English and maths required to undertake this course.

What's involved:

The syllabus is divided into six units:

AS

Unit 1: Basic biochemistry and cell organisation - written paper (20% total marks)

Unit 2: Biodiversity and physiology of body systems - written paper (20% total marks)

Unit 3: Practical assessment - experimental work at centre, marked externally (10% total marks)

A2

Unit 4: Metabolism, microbiology and homeostasis - written paper (20% total marks)

Unit 5: Environment, genetics and evolution - written paper (20% total marks)

Unit 6: Experimental work at centre, externally marked (10% total marks)

Moving on:

Students can use this subject as a platform for entry into medicine, dentistry and veterinary science. Other degree courses that are available include pharmacy, biomedical sciences, radiography, optometry, nursing and many other health related careers.

Biological science degrees can lead to a career in research, genetics, forensics and public health. Some students combine human biology with other subjects in order to study psychology, law or journalism.

For the second year running our Geology students won the South Wales Geology Challenge organised by the Geological Society of London. The team went on to compete against five other regional winners at the national finals held in London and came runners up, beaten only by Wells Cathedral School. The team was captained by Hannah Collis and included Alastair Evans, Daniel Peel, Dylan Roberts and Eleanor Tandy.



Science: (continued)

Physics

Course length: two years

You should seek to achieve seven very good grades at GCSE; grade A or B in physics or double award science and in mathematics are advisable if you are to be confident but C grades are acceptable upon interview. You should have an interest in the world around you, a curiosity about the way things work and enjoy thinking about and solving problems.

What's involved:

Physics expands the range of knowledge beyond GCSE via six modules:

- Particles, Quantum Phenomena and Electricity
- Mechanics, Materials and Waves
- Investigative and Practical Skills
- Fields and Further Mechanics
- Nuclear Physics and Astrophysics, Medical Physics, Applied Physics or Turning Points in Physics

Physics students not sitting Mathematics may have a class focusing on the mathematical skills, information and techniques required for Physics.

Moving on:

Physics has become increasingly important in the world of work and is changing our leisure-time and hobbies. It solves problems, helps diagnose medical conditions, creates new materials to order, is overcoming the energy crisis and, of course, is the science behind the internet.

Physics is the fast track to the widest range of opportunities. Employers rate a Physics qualification so highly because they recognise you as intelligent, logical and practical.

A Level Physics is a useful and, more often, an essential qualification for any technical or scientific course at university, for example physics, engineering (civil, mechanical, electrical or electronic), architecture, medicine or veterinary medicine.

Social Science:

Geography

Course length: two years

The course aims to encourage students to acquire and apply knowledge of the world at a range of scales, through the balanced investigation of physical and human processes, and to develop an understanding of the inter-relationships between people and their environments.

What's involved:

Topics studied for AS are: changing physical environments and changing human environments. Students are required to participate in local field trips.

Topics studied for A2 are: coastal environments, emerging Asia and sustainable development. To support the A2 programme we have recently introduced an overseas trip to Barcelona and intend to offer a similar overseas trip at the end of the AS year of study.

At least a B grade for GCSE Geography is required but we will consider students who have not taken GCSE Geography.

Moving on:

Geography opens up a wide range of career opportunities, including cartography, surveying, meteorology, teaching, planning and other local government positions. Geography students go on to universities across the UK. Three former students graduated from Cambridge and Oxford in 2013 with first class honours degrees in Geography. Two students in 2013 and seven in 2012 achieved the Aberystwyth Scholarship award to study Geography.

Psychology

Course length: two years

Psychology is concerned with helping us understand the thoughts and behaviour of individuals. The course is interesting and challenging, covering many areas within psychology.

What's involved:

The AS Level course involves studying the main approaches in psychology, i.e. psychodynamic, behaviourist, cognitive and biological, including a theory and a therapy for each approach, e.g. social learning, theory of aggression and therapies such as psychosurgery and dream analysis. Students will also have the opportunity to study research methods used by psychologists and ten pieces of psychological research, such as language in animals, stress and health, causes of phobias and obedience to authority.

The A Level course will require students to study research methods and issues in psychology, such as the ethics of using humans and non-human animals in psychological research. Topics covered include psychological controversies, such as role of genes and environment in behaviour, and is psychology a science? Other areas studied include the psychology of relationships, treatment and causes of abnormal behaviour and forensic psychology.

Seven GCSEs, with a B grade in English Language, essential for entry onto this course. B grade in Mathematics and Science desirable, particularly if interested in studying psychology at degree level.

Moving on:

Many of our students study psychology at degree level. This can lead to careers in areas such as criminal psychology, educational psychology, sports psychology and clinical psychology. Psychology is useful for any occupation which involves working with people such as teaching, nursing, social work, human resources and the police force.

Sociology

Course length: two years

What's involved:

Sociology is the study of society, and the way that people organise themselves within it.

For example, why do we have rules (at home, in college and in the law)? Why do women generally play a different role from men i.e. why do they usually do different jobs, dress differently and act differently? Where do we learn who we are and who we are expected to be? Do we believe everything we hear from our parents, from school or from the television and newspapers? How does our gender, ethnicity, age and class affect our life chances?

B grades in English Language and English Literature are essential and C grade in Maths desirable to undertake this course.

Moving on:

A sociology student will develop the skills appropriate for university and also for a range of careers:

- Social work
- Police
- Teaching
- Journalism
- Nursing
- Working for major charities

World Development

Course length: two years

World development is a relatively new and rapidly expanding A Level course.

What's involved:

It is a unique cross-curricular A Level that explores issues of global significance. These include social and economic inequalities and poverty (both within the UK and internationally), environmental sustainability and the responses to these issues by governments and organisations (charities, IMF, UN etc) around the world.

The nature of the subject means it involves a lot of current affairs and is very topical. It contains elements of history, geography, politics, economics and sociology and combines very well with these other A Levels. Students must meet normal A level entry requirements and have at least a C grade in English. An interest in current affairs/news is essential to gaining a good grade during the course.

Moving on:

A good grade in World Development can help students gain entry to university and many of our students go on to study development-related degrees. International politics/relations, development studies and economics are common degrees for our students to take.

World Development is also a route into employment with non-governmental organisations and charities, global organisations such as the World Bank, IMF and more local and national employers such as local governments and councils.

Media Studies

Course length: two years

The WJEC Media Studies specification is designed to allow students to draw on their existing experience of the media and to develop their abilities to respond critically to the media.

Ideally, students should have a B grade in GCSE English to meet the requirements of the course.

What's involved:

The course enables students to explore a wide variety of media, including digital media technologies, drawing on the fundamental concepts informing the study of the media: texts, industry and audiences. It also encourages creative work to enable students to gain a greater appreciation of the media through their own production work and to develop their own production skills. At A2, in particular, students are given the opportunity to research a topic which will then form the basis for their production, thus encouraging them to create work informed by an awareness of contemporary media issues.

Moving on:

This qualification provides a suitable foundation for the study of Media Studies or a related area through a range of higher education degree courses; progression to the next level of applied qualifications (eg some degree and HND courses); or direct entry into employment. In addition, the specification provides a coherent, satisfying and worthwhile course of study for candidates who do not progress to further study in this subject.

Aaron Willmott achieved a maximum 120 marks in the January external A Level Geography exam – he also studied Biology and Chemistry and was a member of the Surf Academy. Aaron is now studying for a degree in Environmental Earth Sciences.



Media (continued)

Film Studies

Course length: two years

The AS/A Level in Film Studies is designed to deepen students' understanding, appreciation and enjoyment of film, the major art form of the twentieth century, and one developing new modes of expression and exhibition in the first decades of the twenty-first century.

A grade B in English GCSE is required to undertake this course.

What's involved:

The course builds on the cineliteracy learners have developed informally since childhood. They will study film deriving from a variety of production contexts and experienced in a variety of viewing situations. They will also engage with a wide range of different kinds of films, developing skills of observation, critical analysis and personal reflection, as well as developing their creativity and practical skills, either in audio-visual or written form. A variety of forms of assessment are used, with the intention of producing imaginative, active learners.

Moving on:

This qualification provides a suitable foundation for the study of Film Studies or a related area through a range of higher education degree courses; progression to the next level of applied qualifications (eg HND); or direct entry into employment. In addition, it provides a coherent, satisfying and valuable course of study for all candidates.

Performing Arts and Music

Dance

Course length: two years

The aim of the course is to give students experience of performance, choreography and dance analysis. You do not need GCSE Dance but a GCSE profile to include English at grade C is required. Students should display an interest in contemporary dance and a willingness to participate fully in extra rehearsal work.

What's involved:

The focus of the first year (AS) is the development and performance of your own choreography and performing as part of a duo/trio. You will have practical training on technique and the health and safety of the dancer and develop critical skills in order to analyse choreography and performance.

The second year (A2) provides the opportunity to develop skills and extend and apply knowledge gained at AS. The focus of choreography shifts towards group dance. You will develop knowledge and understanding of a specific area of study and performance skills will be developed in relation to this.

A studio fee of £40 is charged as a contribution towards theatre visits and workshops.

Moving on:

Higher education provision for dance has rapidly grown in this country and continues to develop. Destinations in recent years have included Bath Spa, Laban and London Contemporary Dance School. Employment opportunities exist in education, performance, administration and choreography.

Drama

Course length: two years

Learners are required to have a keen interest in performing and the development of dramatic skills. No previous experience in the subject is necessary.

What's involved:

The course is divided into four units:

- Performance Workshop (40% of the AS examination) - practical performance. For this unit you will act in a group in a performance from a set text and a devised piece.
- Text in performance (60% of the AS examination) - two hour written paper.
- Performance on a set theme (60% of the A2) - practical performance.
- Text in context (40% of the A2) - two and a half hour written paper.

A studio fee of £40 is charged as a contribution towards theatre visits and workshops.

Moving on:

Learners studying A Level Drama have progressed onto studying at leading drama colleges such as RADA, LAMDA, Bristol Old Vic and The Central School of Speech and Drama. Many learners go on to study drama at university.



Performing Arts ACADEMY

The Performing Arts Academy activities give students the opportunity to enhance their standards of performance through working with specialist staff in a range of performing arts disciplines.

- Drama
- Dance
- Orchestra
- Singing
- Classical Ballet
- Jazz Dance
- Audition Preparation

Clement Jones receiving the Performing Arts achievement of the year award for his work on the A Level Drama course. He is taking a Gap year and will then take up one of the five offers he has received to study for a degree in Drama.

Music

Course length: two years

The A Level Music course at the college has long enjoyed a reputation as being one of the largest and most successful courses of its type in Wales.

What's involved:

Students will be provided with a broad-based musical education, covering topics such as an investigation into significant musical developments (1650 – present), a study of several noted 'set works', and the techniques associated with song-writing, film composition, dodecaphonism, minimalism and other styles. Significant 'performance support' from our designated performance coach is a feature unique to Gower College Swansea.

GCSE Music grade A or B, or grade V Theory (ABRSM), is required to undertake this course.

Moving on:

Many students progress to read music at leading conservatoires/universities throughout the UK. With an ever-increasing range of musical subjects being introduced at degree level, the opportunity to find a course that is virtually 'tailor-made' for the individual student has never been so buoyant.

Post-degree, former students have been fortunate enough to find gainful employment as performers, composers, music journalists, teachers and recording engineers, to name but a few potential avenues of exploration.

Music Technology

Course length: two years

GCSE Music is not needed to undertake this course but some theoretical knowledge will be advantageous and you should be able to play a musical instrument.

What's involved:

Music technology is an exciting area where students are given the opportunity to study the creation and production of music across a wide spectrum of popular culture. Students will study hardware and software techniques of production and will have access to a wide range of studio recording and editing facilities. Students are encouraged to explore their musicality and create original materials using technology. Each of the practical modules requires students to produce a finished portfolio of work containing recording and sequencing productions.

This is an ideal course for musicians who wish to explore their creativity with the aid of technology.

Moving on:

There are many important opportunities in higher education with a wide range of courses available, and many career possibilities for those proficient in handling music technology.

Within the music industry itself students may embark upon a wide variety of professions, from the more obvious opportunities as sound engineer or record producer to the many related roles in the media industry as a whole.

Physical Education

Course length: two years

This course enables students who enjoy sport and sporting activities to develop their all-round knowledge of the subject while pursuing an academic course they enjoy and can relate to

What's involved:

During the course they will study a wide and interesting range of modules, such as exploring the contemporary sociological issues in modern sport and examining the effects of exercise and the relationships between training and performance.

The course attracts those who have a lively and enquiring mind, a keen interest in physical education (although no prior qualification is required), a willingness to explore new ideas and an ability to communicate ideas effectively.

Moving on:

This course is relevant to the needs of those wishing to pursue a career in sport and leisure, particularly at management level, and as a physical educationalist. A Level Physical Education is also a route for entry to degree courses at universities or other higher education courses.

Beth Bingham received the Sporting Achievement of the Year award for 2013. As well as her achievements in her A Level studies in PE, Maths and Human Biology, she was a valuable member of the Hockey Academy. Beth also played for British Colleges, Wales U18 and the Wales Senior team and is now studying for a degree in Sport and Exercise Science at Loughborough University.

The Manic Street Preachers paid a surprise visit to the college as part of a nationwide radio station tour.

Arranged by Swansea Sound and The Wave, students from the college's music and music technology courses were invited to the recording session where the trio played a track from their new album.



Vocational

From Entry to Level 5

You may already know which career you want to progress to. If so, the college has a range of vocational courses, designed to lead to specific careers.

If you preferred the coursework element of GCSEs to the examinations, then a vocational course may be the best choice for you. Courses are available at different levels and students can slot into the level which best matches their entry qualifications, with the opportunity to then progress to the next level.

The major choices are:

BTEC

Diploma/Certificate (Level 1)

One-year course, equivalent to GCSE grades of D-G.

Diploma (Level 2)

60 credit (six unit), one-year course, equivalent to four GCSEs.

90-Credit Diploma (Level 3)

90 credit, one-year award equivalent to one and a half A Levels.

Diploma (Level 3)

120 credit (12 unit), two-year award, equivalent to two A Levels.

Extended Diploma (Level 3)

180 credit (18 unit), two-year award, equivalent to three A Levels.

For each of these courses you will be asked to compile a portfolio of evidence which will be internally assessed. Some courses do have certain units that are assessed by external tests.

NVQ

National Vocational Qualifications (NVQs) are achieved through assessment and training. They are practical qualifications, based on being able to do a job, with five levels, ranging from Level 1 to Level 5.

City & Guilds

These have also been developed to equip students with skills for the workplace. City & Guilds qualifications are valued by employers because they are developed in conjunction with key industry bodies, ensuring that they are always relevant and up-to-date.

Contents

Art and Design	36
Business, Accountancy and Law	40
Catering and Hospitality	46
Computing and Technology	50
Electrical and Plumbing	52
Engineering	58
Hair and Beauty	62
Health and Childcare	66
Independent Living	72
Media	76
Motor Vehicle	78
Performing Arts and Music	82
Public Services	86
Science	88
Sport	90
Travel and Tourism	92



Entry Requirements

This is a guide only. Students would normally be expected to achieve the following minimum entry qualifications:

Entry Level

e.g. Vocational Access course - there are no formal entry requirements.

Level 1

e.g. Diploma - a number of GCSEs at D-G grades or above.

Level 2

e.g. Diploma, Extended Certificate, Certificate - one GCSE at grade C, supported by a number at grade D or above.

Level 3

e.g. Extended Diploma, Diploma, Subsidiary Diploma, Certificate - five GCSEs at grade C.

Apprenticeships

If you are applying for an apprenticeship you should demonstrate a commitment to a career in the area.

Additional Assessments

Some courses will also have an assessment as part of the interview process e.g. Level 2 plumbing courses.

Progression Through the Levels

In most instances students who achieve a course at one level can move on to the next level in that subject area.

GCSE Re-sits

Students will be strongly encouraged to re-sit GCSE English, Mathematics, Science and Welsh (First Language), where required, and provision is made for these subjects to be studied within the first year of their course.

Examinations will usually be sat at the end of the first year of study.

Vocational Results

Subject	Level	Entries	Pass %
Diploma in Art and Design	2	18	78%
Diploma in Art and Design	3	14	100%
Diploma in Fine Art	3	8	100%
Foundation Diploma in Art and Design	4	28	93%
Diploma in Business Administration	1	14	100%
Diploma in Business	2	10	100%
Diploma in Business	3	30	100%
Diploma in Professional Cookery	Entry	22	100%
Diploma in Professional Cookery	1	22	100%
Diploma in Professional Cookery	2	11	91%
Diploma in Hospitality	3	4	100%
Diploma in IT	2	22	77%
Diploma in IT	3	21	100%
Diploma in IT (software development)	3	17	100%
Performing Engineering Operations	1	54	100%
Performing Engineering Operations	2	26	81%
Certificate in Basic Plumbing	2	36	100%
Diploma in Electrical/Electronic Engineering	3	9	100%
Certificate in Engineering and Technology	1	10	90%
Certificate in Electrotechnical Technology	2	35	89%
Diploma in Mechanical Engineering	3	4	100%
Diploma in Engineering	3	21	100%
Hairdressing (NVQ)	1	24	100%
Beauty Therapy	2	42	95%
Hairdressing (NVQ)	2	50	94%
Beauty Therapy	3	23	100%
Hairdressing (NVQ)	3	16	100%
Personal and Social Development	1	10	100%
Diploma in Childcare	1	17	100%
Personal and Social Development	2	18	90%
First Diploma Childcare	2	21	81%
Diploma in Childcare	3	48	100%
Diploma in Health and Social Care	3	66	100%
Diploma in Applied Science	2	6	100%
Diploma in Applied Science	3	8	100%
Diploma in Creative Media Production	2	4	100%
Diploma in Creative Media	3	27	100%
C&G Motor Vehicle	1	30	93%
C&G Motor Vehicle (Maintenance and Repair)	2	13	77%
Diploma in Motor Vehicle	3	5	100%
Diploma in Performing Arts	2	16	100%
Diploma in Performing Arts (Acting)	3	10	100%
Diploma in Performing Arts	3	35	100%
Diploma in Production Arts	3	5	100%
Diploma in Music	3	12	100%
Diploma in Music Technology	3	8	100%
Diploma in Sport	2	25	92%
Diploma in Public Service	2	18	78%
Diploma in Sport	3	49	100%
Diploma Public Services	3	56	100%
Diploma in Travel and Tourism	2	18	86%
Diploma in Travel and Tourism	3	11	100%

Art and Design



There are Welsh speaking staff in this area.

Art and Design

Level 2

BTEC Diploma

Llwyn y Bryn Campus

Course length: one year

This course offers a sound introduction to a range of practical disciplines within art and design such as drawing, painting, ceramics, sculpture, textiles, print-making and photography.

Grade C or above in GCSE Art and Design preferred - equivalent qualifications (Level 1 vocational studies with art content) will be accepted pending interview.

What's involved:

Study units include:

- Contextual references in art and design
- 2D and 3D visual communication
- Using ideas to explore, develop and produce art and design
- Working with visual art and graphics briefs
- Building an art and design portfolio
- Working in the art and design industry
- Essential skills to help with literacy, numeracy and IT will be delivered by specialist staff as part of the course timetable

Please note that there is a studio fee of £50 for this course.

Moving on:

Students are able to progress to a Level 3 Extended Diploma in Art and Design, with a final grade of a merit from their Level 2 Art and Design diploma course.



Matthew Otten, an illustration student at Swansea Metropolitan University, conducted a print workshop for students on the Level 2 Art and Design course.

Art and Design

Level 3

BTEC Extended Diploma

Llwyn y Bryn Campus

Course length: two years

Build it, sew it, paint it, print it, shape it, draw it, love it! If you want an exciting career in art and design then here's the place to start.

What's involved:

This course offers a range of practical disciplines within art and design including: fashion, photography, graphic design, fine art and 3D crafts. Students will specialise in a pathway after sampling all areas.

Work produced will create a portfolio of exciting and stimulating pieces, which can be used to secure entry to higher level courses. Work will also be exhibited through various mediums including gallery space, installations, digital portfolios and fashion shows.

Please note that there is a studio fee of £75 for this course.

Moving on:

Students are able to progress onto a number of higher education courses such as degree, foundation degree or HND. Successful students have gone on to various degree courses throughout the UK, and to also win a number of prestigious Art & Design competitions



*Tara Tarapetian left us with a D*D*D* grade in Art & Design Extended Diploma, and went on to study BA Hons Fashion Design at University of South Wales, Cardiff, from where she graduated this year with a 1st class honours degree. Whilst there she won a number of prestigious completions:*

- 1st Prize Place Winner for Project Peacocks Collection
- University of South Wales, Cardiff: Womenswear Collection of the Year 2013
- University of South Wales, Cardiff: Outstanding Academic Achievement of the Year 2013

Tara is currently expanding her graduate collection to produce her own luxury high-end fashion brand and also undertakes freelance design work.

Art and Design Level 3/4 Foundation Diploma

Llwyn y Bryn Campus
Course length: one year

The foundation year provides a basis for the study of art and design and is tailored to help students make an informed decision about their preferred route into specialised study within higher education. It provides students with an ideal opportunity to create or develop a specialist portfolio to secure a place on a higher level course.

Entry onto the foundation course requires one subject at A Level in addition to five passes at GCSE, including English Language (or Welsh) at C or above, or other qualifications considered to be equivalent. Those who can demonstrate an aptitude for art and design may be considered for entry without formal qualifications.

What's involved:

This intensive programme is predominantly practical and teaches a mature and sophisticated understanding of concept and contexts, enabling students to explore fresh, stimulating and inventive ideas to develop an individual voice and style. It is taught through a series of vibrant artist-led workshops and lectures.

Please note that there is a studio fee of £100 for this course.

Moving on:

Successful completion of the foundation course is a vital requirement for progression to higher education and prepares students for application to a wide range of degree courses which combine practical and theoretical studies. In previous years, 100% of students have gained university places including theatre design at the Royal Welsh College of Music and Drama, photography at Newport, sculpture at the University of the Arts London, Camberwell, design at Central St. Martins, fashion design at Nottingham Trent and fine art at Leeds.

Creative Media Level 1 BTEC Diploma

Llwyn y Bryn Campus
Course length: one year

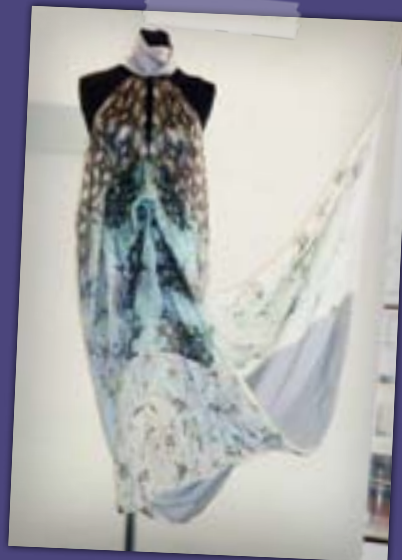
This course forms a foundation in the creative industries.

What's involved:

Students study the major creative subjects of art and media throughout the year alongside other important life skills such as ICT, literacy and numeracy. This course is taught in a very supportive manner and recognises that students often flourish in an environment which is different from school. Students will take part in music video, art, and photography projects designed to build personal, creative and technical skills.

Moving on:

Students generally choose to specialise in one of the creative pathways and progress onto a Level 2 Diploma course in art or media.



Dress designed and created by Rhian Beynon who achieved a Distinction on the Foundation course and progressed to a BA(Hons) Surface Pattern course at Bath Spa University.

Students on the Level 3 Diploma in Photography course photographed the famous Aberdulais Falls during a field trip to the area and were then invited to exhibit their work at the Aberdulais Visitors Centre.

Photography Level 3 BTEC 90 Credit Diploma

Llwyn y Bryn Campus
Course length: one year

The course is directed towards learners with existing experience and skills in photographic practice.

What's involved:

There will be a strong emphasis on practical working in both the studio and on location. Learners will explore a variety of genres including advertising, fashion, documentary, travel and many other areas of photography. They will follow set briefs and have the opportunity to write their own professional briefs in their own specialist pathways.

Learning will take place at the Llwyn y Bryn campus which has specialist studio space, purpose-built Mac digital suites and a fully-functioning black and white darkroom.

An A Level in photography or industrial photographic experience will be required to undertake this course.

Please note that there is a studio fee of £100 for this course.

Moving on:

The course is designed to support students in one of two pathways. Emphasis will be put on the creation of a strong portfolio for students to then take to the workplace or to higher education interviews. A diverse skills base will be taught so that students will feel confident to strive for their chosen pathway. Each learner will also be developing strong links with industry and creating their own web sites and promotional materials. Entrepreneurial support lessons will also run throughout the year.





Art Exhibitions

A series of exhibitions of student work will be open to the public at the Swansea Grand Theatre Arts Wing between Tuesday 3 and Friday 27 June 2014.

Check our website for information on these and other exhibitions taking place during the year.

www.gowercollegeswansea.ac.uk   



Business,
Accountancy
and Law

Accountancy Apprenticeship

Level 2/3

Sketty Hall

Course length: one year

People who have already gained relevant employment and like to learn in the workplace will prefer this method of study.

What's involved:

The accountancy area has a specified framework including essential skills and technical certificates.

Association of Accounting Technicians (AAT) Foundation (Level 2)

Study units include recording income and receipts.

Association of Accounting Technicians (AAT) Intermediate (Level 3)

Study units include maintaining financial records and preparing accounts.

Moving on:

Employment in the business, finance or accountancy sectors or progression to AAT 4.

Accountancy AAT Level 2

Gorseinon Campus

Course length: one year

The AAT is the Association of Accounting Technicians, the UK's leading professional body offering skills-based accountancy and finance qualifications.

What's involved:

At this level you'll start to develop your skills in double entry book-keeping and gain a grasp of management and administrative processes. You'll learn basic costing principles, how to use manual and computerised accounting systems and how to work with purchase, sales and general ledgers.

This qualification is a skills-based qualification, broadly equivalent in size to one AS Level, and would normally be taken as an AS subject or alongside the first year of the BTEC Extended Diploma in Business. AAT 2 can be taken alongside AS Accounts - please ask staff regarding the best options for you.

Units include:

- Processing book-keeping transactions
- Control accounts, journals and the banking system
- Basic costing
- Computerised accounting
- Work effectively in accounting and finance

Moving on:

AAT 3 Diploma.

Accountancy AAT Level 3

Gorseinon Campus

Course length: one year

The AAT is the Association of Accounting Technicians, the UK's leading professional body offering skills-based accountancy and finance qualifications.

What's involved:

This level introduces more complex accounting tasks, like preparing final accounts for sole traders and partnerships. You will also learn how to maintain cost accounting records and preparation of reports and returns. Financial spreadsheets, cash management and professional ethics are also covered.

This qualification is broadly equivalent to one A Level and would normally be taken as an A2 subject or alongside the second year of the BTEC Extended Diploma in Business - it can be taken alongside A2 Accounts.

Units include:

- Accounts preparation
- Prepare final accounts for sole traders and partnerships
- Costs and revenues
- Indirect tax
- Professional ethics
- Spreadsheets

Moving on:

AAT 4 (part time), Apprenticeships (please speak to staff regarding options) or university.

Business Administration Level 1 BTEC Diploma

Tycoch Campus

Course length: one year

Delivery of the course is undertaken by highly qualified lecturers who strive to provide a course which emulates the real business world. This course is an introduction to working within the business and administration sectors. It prepares students for the world of work and may allow progression to the BTEC Level 2 Diploma in Business.

What's involved:

Study units include:

- Creating business documents
- Welcoming visitors
- Working in business and administration
- Recording business transactions
- Preparing for work placement
- Business administration group project

In addition, this course also includes the IT USERS Award qualification, which has been developed to include a range of ICT models to help enhance the learners ICT skills. Units include: Improving Productivity, E-mail, PowerPoint, Word and Spreadsheets.

No formal entry requirements for this course.

Moving on:

Progression to Level 2 Business or employment.

Business

Level 2 BTEC Diploma

Gorseinon Campus

Course length: one year

This course focuses on how the business world develops, operates and responds to change. It equips students with the knowledge and understanding necessary for the world of work.

What's involved:

The course will include vocationally relevant additional studies, e.g. the Institute for Financial Services (IFS) Foundation Certificate, Information Technology or the OCR Certificate in Enterprise.

The course has been developed to include a range of business-related subjects, with the emphasis on practical application of relevant theory. This includes running a business as part of the young enterprise programme.

Study units include:

- Financial forecasting for business
- Promotion and branding
- Starting a small business

Moving on:

Employment in the business sector or progression to a Level 3 programme, such as BTEC Business Level 3 (requires a Merit or Distinction profile).

Business

Level 2 BTEC Diploma

Tycoch Campus

Course length: one year

Delivery of the courses is undertaken by highly qualified lecturers who strive to provide a course which emulates the real business world. This course is ideally suited for those who wish to study Business, Financial Services, Marketing, Customer Relations and Business Planning.

What's involved:

Study units include:

- Financial Forecasting for Business - Customer Relations
- Promotion and Branding - Business Organisations
- Starting a Small Business - Business Purposes
- People in Organisation - Business Ethics

This qualification will also include the professional qualification of the Institute for Financial Services (IFS) and IT USERS Award:

- The IFS qualification gives an excellent introduction to the area of financial services and financial advice.
- The IT USERS Award has been developed to include a range of ICT models to help enhance the learner ICT skills. Units include Improving Productivity, E-mail and Spreadsheets.

Four GCSEs at grade D or above or the Level 1 Diploma at Pass level are required to undertake this course.

Moving on:

Progression to Level 3 Business or employment.

Business Level 3 BTEC Diploma (90 Unit Credit)

Gorseinon Campus

Course length: one year

A one-year assessment based programme enabling learners to complete the new 90 Unit Credit Diploma. The course is intended for all learners but will particularly suit students who only wish to study for one year. Five GCSEs at grade C or above, or equivalent, are required to undertake this course.

There is an option at the end of year one to continue with your studies for one further year to complete the full Extended Diploma in Business Management programme.

What's involved:

The course is made up of nine business-related units:

- Business Environment
- Business Resources
- Introduction to Marketing
- Business Communication
- Business Accounting
- Internet Marketing
- Market Research
- Training in the Business Workplace
- Developing Teams in Business

Moving on:

Progression to the full Extended Diploma in Business Management programme, management and training in the private and public sector, banks and other financial institutions and opportunities for entrepreneurial talent to be developed in own business ventures.

Business Express Level 3 BTEC Diploma

Gorseinon Campus

Course length: one year

A one-year assessment based express programme to provide learners with a fast-track route to achieving the BTEC Level 3 Diploma. The course is intended for all learners but will suit students who have possibly completed some further studies on either Vocational or A Level programmes and who now wish to follow the vocational route to complete their final qualifications.

Five GCSEs at grade C or above, or equivalent, required to undertake this course.

What's involved:

The course is made up of 12 relevant business units:

- Business Environment
- Business Resources
- Introduction to Marketing
- Business Communication
- Business Accounting
- Internet Marketing
- Market Research
- Training in the Business Workplace
- Developing Teams in Business
- Development Planning for a Career in Business

Moving on:

Progression to higher education, management and training in the private and public sector, banks and other financial institutions, and opportunities for entrepreneurial talent to be developed in own business ventures.

Particularly useful for students having completed some further studies who want to be able to progress to Higher Education as originally planned as the course offers a maximum of 280 UCAS points that can be achieved in one year.

Business Level 3 BTEC Diploma

Tycoch Campus

Course length: two years

Delivery of the courses is undertaken by highly qualified lecturers who strive to provide a course which emulates the real business world.

What's involved:

This course is ideally suited for those who wish to study business, financial services, marketing, business communications and business management or set up their own business. Four GCSEs at grade C or above, including English, or the Level 2 Diploma at Merit level or Distinction required to undertake this course.

CHRYNWIESTER
BAGLORIAETH CYMRU | WELSH
CYMRU | WELSH
BACCALAUREATE
QUALIFICATION

This qualification will also include the professional qualification of the Institute for Financial Services (IFS) and Welsh Baccalaureate.

The IFS qualification gives an excellent introduction to the area of financial services and financial advice.

The two-year Welsh Baccalaureate is a core element of the programme. This qualification helps develop a range of employability skills and will give the students a greater understanding of Wales and the wider world.

Moving on:

University or employment.



Business students visited the Bank of England and Buckingham Palace during a trip to London.

Business

Level 3 BTEC Extended Diploma

Gorseinon Campus
Course length: two years

Delivery of the course is undertaken by highly qualified lecturers with a balance of experience in teaching and industry, ensuring that students receive a credible and relevant business education.

What's involved:

The Virtual Business model enables students to participate in the running of a real business and to participate in national and international events. Entrepreneurship is vigorously promoted, providing opportunities for students to apply what they are learning in a real 'hands on' environment.



The optional Welsh Baccalaureate module is seamlessly combined into the programme, broadening students' knowledge, understanding and experience of the social and economic environment.

Each course option is made up of a set number of units including business management, marketing, information technology, business environment and accountancy.

Moving on:

Progression to higher education, management training in the private and public sector, banks and other financial institutions, opportunities for entrepreneurial talent to be developed in own business ventures.

Criminology

Level 3 Certificate (WJEC)

Gorseinon Campus
Course length: one year

This qualification is designed to give learners an introduction to the theory and skills application of criminology.

It is a skills-based qualification, broadly equivalent in size to one AS Level, and would normally be taken as an AS subject. The criminology Level 3 Certificate can be taken alongside other AS subjects such as law or psychology - please ask staff regarding the best options.

What's involved:

The following units are studied:

- **Introduction to Criminological Theories**

The purpose of this unit is to enable learners to use theories of criminality to analyse criminal situations and make recommendations for policy.

- **Crime Scene to Courtroom**

Through this unit, learners will develop the understanding and skills needed to examine information to review the justice of verdicts in criminal cases.

Moving on:

Criminology Level 3 Diploma.



Enterprise and Entrepreneurship

Level 3 BTEC Diploma

Dylan Thomas Centre
Course length: one year

This is an exciting opportunity for learners which requires them to start and run their own business. The learners will develop a range of techniques, personal skills and attitudes essential for successful performance in working life.

The course will be supported by a number of high profile entrepreneurs who will mentor and work with the students in order that they achieve their goals.

What's involved:

The course has been developed in order to offer a qualification that:

- requires learners to start up and run a fully functioning legal business to develop their entrepreneurial skills
- requires learners to focus on their own self-development through the start-up process
- ensures that learners interact with entrepreneurs and business people throughout the course of their study to enable them to learn from experienced professionals

This course would ideally suit students who have a keen business brain and who are seeking expert help and advice in setting up their own business. Students aged between 18 and 30 will receive knowledge and guidance from guest speakers as well as experiencing master classes and workshops, together with mentoring from some of the most successful entrepreneurs in Wales.

It is equivalent to two A Levels.

Moving on:

This unique opportunity will provide students with an opportunity to develop their employability skills and start their employment journey, set up their own business, or attend university to broaden their knowledge base.



Looking for
something
productive to do
on your gap year?

Start your own business with support given by partners such as Chamber of Commerce, local entrepreneurs and business leaders from across Wales who also offer financial support to get your business off the ground.

If you are interested contact:

Rebecca McLelland
0782 533 0655

rebecca.mcLelland@gowercollegeswansea.ac.uk





There are Welsh speaking staff in this area.

Catering and Hospitality

**Introduction to Catering
Entry 3 Introduction to
Hospitality Industry**
Tycoch Campus
Course length: one year

This course is ideal to introduce students to the catering and hospitality industry through preparation and cooking of classic dishes.

What's involved:

While developing your culinary knowledge you will also complete additional qualifications including food hygiene, L1 Award in Home Cooking Skills, food service, Award in Workskills and two essential skills (literacy and numeracy).

Moving on:

Level 1 VRQ Professional Cookery, following successful interview with the team, or related employment.



**Professional Cookery
VRQ Level 1
Diploma City & Guilds**
Tycoch Campus
Course length: one year

This City & Guilds vocational qualification is proactive in addressing the needs of the individual and the industry. It offers the knowledge and practical skills necessary to achieve an industry recognised qualification and a career in food preparation and cooking.

What's involved:

Students will develop the essential culinary skills associated with the industry while also acquiring the underpinning theoretical knowledge. The course timetable includes practical sessions, enabling you to develop your customer service and food service skills in the Vanilla Pod, our training restaurant based at Tycoch campus.

Moving on:

The Level 1 Diploma in Professional Cookery is valued by employers and there are several alternative routes for progression.

Employment opportunities in general hospitality, food preparation and cooking or further education e.g. Level 2 Diploma in Professional Cookery (application and interview required).

**Professional Cookery
VRQ Level 2
Diploma City & Guilds**
Tycoch Campus
Course length: one year

Elements of this course can be delivered through the medium of Welsh.

The qualification will ensure that learners build on the culinary skills learned in the Level 1 VRQ Diploma.

What's involved:

Students will develop their practical skills while preparing a range of commodities. Theoretical units provide a broad understanding of catering and hospitality, essential for those aspiring to work in the industry.

The course timetable includes practical sessions enabling you to develop your customer service and food service skills in the Vanilla Pod, our training restaurant based at Tycoch campus.

Work placement is also included as part of the course along with developing your literacy and numeracy.

Moving on:

The Level 2 Diploma in Professional Cookery is valued by employers and there are several alternative routes for progression.

Employment opportunities in general hospitality, food preparation and cooking or further education Level 3 in Professional Cookery (application and interview required).

Professional Cookery

VRQ Level 3

Diploma City & Guilds

Tycoch Campus

Course length: one year

The course will ensure that learners build on the knowledge gained on the Level 2 VRQ Diploma and develop their advanced culinary skills.

What's involved:

Theoretical units underpin the delivery and provide an in-depth understanding of the taught practical elements, essential for those aspiring to work in the industry.

The course allows students to study an additional qualification which allows for the development of pastry and confectionery skills. The timetable includes practical sessions where you will prepare food for gourmet and themed evenings in the Vanilla Pod, our training restaurant based at Tycoch campus.

Moving on:

Supervision/management NVQ courses. or employment opportunities in general hospitality, food preparation and cooking.



Former student, Martin Davies – chef at the award winning Britannia Inn - returned to the college to talk to Catering students about the realities of working in the industry. He is seen working with students as they prepared for lunch service in the Vanilla Pod restaurant.

Vanilla Pod

at Gower College Swansea
Tycoch Campus

*Open to
the Public*

Swansea's Premier Training Restaurant

This popular student training facility welcomes all customers to sample fine dining at its best.

Open Tuesday, Wednesday and Friday for lunch and also Thursday evening for dinner (term time only).

All dishes are prepared, cooked and served by our full time hospitality and catering students.



01792 284252/284218

vanillapod@gowercollegeswansea.ac.uk

www.gowercollegeswansea.ac.uk

Computing and Technology



IT

Level 1 BTEC Diploma

Tycoch Campus

Course length: one year

The course is an introduction to the roles that exist within the IT industry. It prepares students for the world of work by developing both the technical and inter-personal skills that are valued by employers.

What's involved:

The programme consists of 14 subjects and IT study skills include:

- Databases
- Spreadsheets
- Building PCs
- Editing photographs and other digital images
- Editing audio files
- Websites

In addition to the IT skills the course will also develop inter-personal and transferrable skills such as communication, team working and leadership that will assist students seeking employment.

Moving on:

Students who have successfully completed the course can progress to the Level 2 Diploma in IT.

IT

Level 2 BTEC Diploma

Gorseinon/Tycoch Campus

Course length: one year

This course will appeal to students who wish to develop ICT skills. It provides specialist work-related qualifications in the IT sector, giving learners the knowledge, understanding and skills that they need to prepare for employment in the IT industry.

What's involved:

It consists of eleven modules, all IT specific. For each module the student will be either working on or within a computer.

Modules studied include:

- Communicating in the IT industry
- Working in the IT industry
- Computer systems
- Website development
- Event driven programming or installing software
- Computer graphics
- Computer animation
- Databases
- Spreadsheets

In addition to the IT skills, the course will also develop inter-personal and transferrable skills such as communication, team working and leadership that will assist students seeking employment.

Moving on:

Students who have successfully completed the course can progress into employment or continue onto the BTEC Level 3 Extended Diploma in IT.

IT

Level 3 BTEC Extended Diploma

Gorseinon/Tycoch Campus

Course length: two years

This course aims to provide students with a career pathway into IT, providing you with the skills to have a future as a games programmer, technician, website designer or project manager.

What's involved:

18 modules are studied, including:

- Computer networks
- IT systems trouble-shooting and repair
- Developing computer games
- Database design
- Computer systems
- Event driven programming
- Computer animation
- Website design
- Systems analysis and design
- Network systems security
- Communication technologies
- Communication and employability skills for IT
- Mathematics for IT practitioners

Moving on:

Previous students have gone on to study a wide range of IT or computing related degrees in university including: computer information systems, computer forensics, computer games development and computer science. Their choice of university has also been varied, including Swansea, Glamorgan, Swansea Metropolitan and Cardiff.



Electrical and Plumbing



Electrical City & Guilds

Electrical Installation

Level 1

City & Guilds Diploma 7202

Tycoch Campus

Course length: one year

The Electrical Installation sector continues to suffer from a skills gap and needs to keep up with rapidly developing technologies.

This qualification is intended for learners who would like to prepare for a career in the electrical industry. It provides an entry point into the industry and aids progression onto Level 2 courses

Moving on:

On successful completion of the Level 1, learners can progress onto the following qualifications:

Vocational Options:

- City & Guilds 2365 Level 2 Diploma in Electrical Installations
- Level 2 NVQ Diploma in Performing Engineering Operations

Engineering Option:

- BTEC Level 2 Diploma in Engineering

Electrical Installation

Level 2

City & Guilds Diploma 2365

Tycoch Campus

Course length: one year

The Electrical Installation sector continues to suffer from a skills gap and needs to keep up with rapidly developing technologies.

This qualification is intended for those learners who want to work as electricians in the Electrical Installation sector. The qualification, alone, does not make candidates fully-qualified electricians but allows candidates to learn, develop and practise the skills required for employment and/or career progression in the Electrical Installation sector.

Entry is subject to an interview process and candidates must meet college requirements. Acceptance is on the individual's own merit and based preferably on four GCSE grades A - D or other equivalent/relevant qualifications.

Moving on:

On successful completion of the Level 2, learners can progress onto the following qualifications:

Vocational Options:

- City & Guilds 2365 Level 3 Diploma in Electrical Installations
- Electrical Installation Apprenticeship - Level 3 Diploma in Electrical Installation

Engineering Option:

- BTEC Level 3 Diploma in Engineering

Electrical Installation

Level 3

City & Guilds Diploma 2365

Tycoch Campus

Course length: one year

The Electrical Installation sector continues to suffer from a skills gap and needs to keep up with rapidly developing technologies.

This qualification is intended for those learners who want to work as electricians in the Electrical Installation sector. The qualification, alone, does not make candidates fully-qualified electricians but allows candidates to learn, develop and practise the skills required for employment and/or career progression in the Electrical Installation sector.

Entry is subject to an interview process and candidates must meet college requirements. Candidates should already hold the Level 2 Diploma in Electrical Installations, City & Guilds 2365, or EAL 6724 qualification. Acceptance is based upon the individual's merit and above criteria.

Moving on:

On successful completion of the Level 3, learners can progress onto the following qualifications:

Vocational Options:

- Electrical Installation Apprenticeship - Level 3 Diploma in Electrical Installation
- Level 3 Certificate in the Requirements for Electrical Installations (BS 7671 2008)
- Level 3 Award in the Initial Verification and Certification of Electrical Installations
- Level 3 Award in the Periodic Inspection, Testing and Certification of Electrical Installations
- Level 4 Award in the Design and Verification of Electrical Installations

Engineering Option:

- BTEC Level 3 Extended Diploma in Engineering
- Level 4 Electrical Engineering BTEC HNC



Electrical BTEC

Engineering (Electrical) Level 2 BTEC Diploma Tycoch Campus Course length: one year

The engineering sector continues to suffer from a skills gap and needs to keep up with rapidly developing technologies.

The BTEC Level 2 qualifications in Engineering have been designed to give new entrants to the engineering sector the under-pinning knowledge and specific skills needed to meet the needs of modern engineering industries.

Entry is subject to an interview process and candidates must meet the college's pre-requisites. Acceptance is on the individual's own merit and based preferably on four GCSE grades A - D or other equivalent/relevant qualifications.

Moving on:

On successful completion of the Level 2, learners can progress onto the following qualifications:

- BTEC Level 3 Diploma in Engineering
- Electrical Apprenticeship
- Electrical Technician

Engineering (Electrical) Level 3 BTEC Diploma Tycoch Campus Course length: one year

The Electrical Engineering sector continues to suffer from a skills gap and needs to keep up with rapidly developing technologies. These BTEC electrically biased qualifications in engineering have been designed to give new entrants to the engineering sector the under-pinning knowledge and specific skills needed to meet the needs of modern engineering industries.

Entry is subject to interview process and candidates must meet college requirements, however acceptance is based upon the individual's own merit. It is preferable that candidates possess four GCSE grades A - D or equivalent/relevant qualifications.

Moving on:

On successful completion of the Level 3, learners can progress onto the following qualifications:

- HND in Electrical/Electronic Engineering
- Foundation degree
- Electrical Apprenticeship
- Electrical Technician

Engineering (Electrical) Level 3 BTEC Extended Diploma Gorseinon/Tycoch Campus Course length: two years

The BTEC Level 3 Extended Diploma extends and deepens the specialist work-related focus from the BTEC Level 3 Diploma and the BTEC Level 3 Diploma. There is potential for the qualification to prepare learners for appropriate direct employment in the vocational sector and it is suitable for those who have decided that they clearly wish to enter a particular specialist area of work. It is broadly equivalent to three GCE A Levels.

Entry is subject to interview process and candidates must meet college requirements, however acceptance is based upon individual's own merit. It is, though, preferable that candidates possess four GCSE qualifications grades A - D or equivalent/relevant qualifications.

Moving on:

On successful completion of the Extended Diploma, learners can progress onto the following qualifications:

- HND in Electrical/Electronic Engineering
- Foundation degree
- Electrical Apprenticeship
- Electrical Technician



Plumbing Apprenticeships

Plumbing and Heating Foundation Apprenticeship Level 2 NVQ Diploma Tycoch Campus Course length: two years

The aim of this apprenticeship is to provide an introduction into the sector, and start to develop regulation knowledge, practical skills and the science required to undertake plumbing or gas work.

What's involved:

The training covers relevant theory and practical-based training. The training will also provide an understanding of the health and safety requirements governing plumbing and gas processes, and knowledge of the organisation and structure of the plumbing and gas industry.

Moving on:

Upon completing this course, successful candidates will receive a Level 2 Diploma in Plumbing and Heating, and essential skills at Level 2.

Learners who successfully achieve at Level 2 will be considered for progression onto a Level 3 Diploma in Plumbing and Heating, which will take a further two years to complete.

Plumbing, Heating and Gas Apprenticeship Level 3 NVQ Diploma Tycoch Campus Course length: two years

The aim of this apprenticeship is to provide and help develop regulation knowledge, practical skills and the science required to undertake plumbing or gas work.

What's involved:

The training covers relevant theory and practical-based training. The training will also provide an understanding of the health and safety requirements governing plumbing and gas processes, and knowledge of the organisation and structure of the plumbing and gas industry.

Upon completing this course, successful candidates will receive a Level 3 Diploma in Plumbing and Heating. Learners who successfully achieve at Level 2 will be considered for progression onto this framework.

Moving on:

Building Services BTEC/HNC Level 4 (see our part time prospectus or website for details).



© Working Word PR



Plumbing

Access to Building Services Engineering Levels 1 & 2 City & Guilds Tycoch Campus Course length: one year

Need some practical experience to make a career decision? This one year introductory qualification covers four areas of building services engineering plumbing, electrotechnical, heating and ventilation, and refrigeration and air conditioning.

What's involved:

This qualification is designed for people thinking about a career in building services engineering perhaps working within the air conditioning industry or as an electrician or a plumber. You might be a young learner in full time education or an adult.

Moving on:

Successful students can progress to Level 2 Diploma or an apprenticeship in plumbing or gas provided they have secured a work placement.

Plumbing Level 1 Diploma Tycoch Campus Course length: one year

Performing Engineering Operations is an ideal foundation qualification that supports the delivery and assessment of the basic skills and knowledge required by a range of industries.

What's involved:

This course is designed to offer all learners an opportunity to prepare themselves for entry into the plumbing industry.

Each unit has an emphasis to plumbing and consists of the following:

- Working safely in an engineering environment
- Working efficiently and effectively in engineering
- Using and communicating technical information
- Carry out pipe fitting activities
- Wiring electrical equipment and services

Moving on:

Successful students can progress to Level 2 Diploma or an apprenticeship in plumbing or gas provided they have secured a work placement.

Plumbing Level 2 Diploma Tycoch Campus Course length: one year

Performing Engineering Operations is an ideal foundation qualification that supports the delivery and assessment of the basic skills and knowledge required by a range of industries.

What's involved:

This course is designed to offer all learners an opportunity to prepare themselves for entry into the plumbing industry.

Each unit has an emphasis to plumbing and consists of the following:

- Working safely in an engineering environment
- Working efficiently and effectively in engineering
- Using and communicating technical information
- Forming and assembling pipework systems
- Maintaining mechanical devices and equipment
- Preparing and using manual flame brazing and bronze welding equipment

Moving on:

Successful students can progress to an apprenticeship in plumbing or gas provided they have secured a work placement.





SKETTY HALL

01792 284011 enquiries@skettyhall.com www.skettyhall.com



Engineering



There are Welsh speaking staff in this area.

Engineering Apprenticeship Level 3 Diploma

Tycoch Campus

Course length: four years

The engineering sector continues to suffer from a skills gap and needs to keep up with rapidly developing technologies.

What's involved:

This training has been designed to give new entrants to the engineering sector the under-pinning knowledge and specific skills needed to meet the needs of a modern variety of engineering industries. A wide range of units allows learners to focus on their chosen career or area of interest and progress into employment or higher education. These include electrical, mechanical and welding.

The training will include taught sessions comprising of several core units that are common across different engineering titles and include health and safety, mathematics, science, communications and project planning and implementation for success in the specialist units and the engineering workplace. The training will also include the successful completion of a work-based NVQ Level 3 of their chosen career, and essential skills at Level 2. Learners will be expected to complete a Performing Engineering Operations Level 2 qualification in the first year of training. Progression onto the full apprenticeship will be reviewed after the successful completion of this qualification.

Moving on:

Learners will have progression opportunities to higher level courses e.g. HNC Electrical Engineering, HNC Mechanical Engineering, Foundation Degree in Electrical Engineering or Foundation Degree in Mechanical Engineering.



Access to Building Services Engineering Level 1 City & Guilds

Tycoch Campus

Course length: one year

Need some practical experience to make a career decision?

What's involved:

These one-year introductory qualifications cover four areas of building services engineering: plumbing, electrotechnical, heating and ventilation and refrigeration and air conditioning. You'll find out what you enjoy and get a head start on your next qualification - helping you move on to a career.

This qualification is designed for people thinking about a career in buildings services engineering - perhaps working within the air conditioning industry or as an electrician or a plumber. You might be a young learner in full time education or an adult.

Moving on:

Successful students can progress to Level 2 PEO or an apprenticeship in plumbing or gas provided they have secured a work placement.

Engineering Level 2 BTEC Diploma

Tycoch Campus

Course length: one year

The engineering sector continues to suffer from a skills gap and needs to keep up with rapidly developing technologies.

Four GCSEs at grade D or above, including mathematics and science are required to undertake this course.

What's involved:

This Level 2 Diploma has been designed to give new entrants to the engineering sector the under-pinning knowledge and specific skills needed to meet the needs of modern mechanical and electrical engineering industries. The course has been designed with a wide range of units so that learners can focus on their chosen career or area of interest.

It is broadly equivalent to four GCSEs.

The qualification structure is designed to give learners the opportunity to develop a range of skills and techniques, personal skills and attributes essential for successful performance in life.

Moving on:

Learners gaining a Level 2 Diploma in Engineering will have access to a wide range of career and further education opportunities, including progress onto the BTEC Extended Diploma (Level 3) in Engineering or the Apprenticeship Framework. The skills and knowledge the learner would have gained are in great demand and are recognised and highly valued by employers and colleges.



Engineering Level 3

BTEC Extended Diploma
Gorseinon/Tycoch Campus
Course length: two years

The engineering sector continues to suffer from a skills gap and needs to keep up with rapidly developing technologies. This course has been designed to give new entrants to the engineering sector the under-pinning knowledge and specific skills needed to meet the needs of modern mechanical and electrical engineering industries.

What's involved:

A wide range of units allows learners to focus on their chosen career or area of interest and progress into employment or higher education.

Several of the core units are common across different engineering titles and include health and safety, mathematics, science, communications and project planning and implementation for success in the specialist units and the engineering workplace.

Moving on:

Learners wishing to progress onto an apprenticeship and/or degree course should seriously consider this qualification. Career opportunities exist in electrical/electronic/mechanical and other technological and engineering sectors. Learners completing the course have progressed to Swansea University, University of Glamorgan and Aberdeen University to study for the B.Eng. in Mechanical Engineering and Electrical/Electronic Engineering or secured apprenticeships with TATA Steel and GE Aviation.

From one class group of 17, seven achieved three overall starred Distinctions in 2013. Nine students progressed to university, with destinations including Birmingham, Brunel, Plymouth, Swansea and West of England, and eight gained apprenticeships.

Digital Technology

Digital Technology (Introduction)

Level 1

Tycoch Campus

Course length: one year

This programme of study has been designed to introduce students to the exciting world of digital technology.

What's involved:

They will use the very latest in digital technology equipment including:

- Internet Protocol Television
- 3D television
- Computer networks
- Mobile communication technology

The student will study connectivity, basic system design and the basic electronic under-pinning knowledge required to allow the functionality of digital technology equipment.

Moving on:

Successful students will have the opportunity to progress to the Level 2 Intermediate Digital Technology Technician.

Digital Technology Technician (Intermediate)

Level 2 PE0/BTEC

Tycoch Campus

Course length: one year

This course develops the student into a digital technology technician to a Level 2 standard.

What's involved:

The course will explore the very latest technological advances in digital technology. This will include:

- Home integration of digital technology
- 3D television
- Internet Protocol Television
- Mobile communication
- Computer technology (hardware)
- Industrial digital technology applications
- Digital electronics
- Analogue electronics

Moving on:

Successful students have the opportunity to either progress to the advanced digital technology technician course or to enter a Foundation Apprenticeship.

Steve Williams, Digital Technology lecturer, won the Outstanding BTEC Teacher/Tutor of the Year Award for 2013. He was presented with the award by Baroness Tanni Grey-Thompson at the National BTEC Awards ceremony held at the Royal Horticultural Hall in London. Over 700 nominations were received across the 22 award categories.

Steve has developed strong links with industry, helping secure his students work placements in holiday periods, successfully bidding for European funding to enable an exchange programme with German students, and arranging guest speakers, many of whom are former students who have gone on to forge successful careers in the industry. He has worked with WISE to encourage more women into engineering and with organisations such as STEM Cymru to promote engineering to young people.

Under Steve's leadership, his students have entered and been highly commended in electronics World Skills events and the prestigious Education Engineering Enterprise Scheme.

Digital Technology Technician Level 3 Diploma in Electrical/ Electronics EAL

Tycoch Campus
Course length: one year

This course is designed to explore the world of digital technology including analysing and creating solutions with real industrial partners to real life engineering problems.

Entry to this qualification will be a Level 2 vocational electronics qualification or four GCSEs.

What's involved:

Modules studied will include:

- Radio and radar
- Audio visual solutions
- Computer systems
- Home digital integration
- Industrial electronics

Moving on:

This course is designed to support students into the job market via an Advanced Apprenticeship. However it is possible to enter higher education with this qualification.



Digital Technology Technician (Advanced) Level 3 BTEC Extended Diploma Electrical/Electronic Engineering

Tycoch Campus
Course length: two years

This course is designed to support the student to achieve a university place in a digital technology/electronics discipline.

Entry requirements are a Level 2 vocational electronics qualification or four GCSEs at grade C or above.

What's involved:

Students will study:

- Mobile communication
- System design
- Home integration
- Engineering mathematics
- Analogue electronics
- Digital electronics

Modules studied will include:

- Radio and radar
- Audio visual solutions
- Computer systems
- Home digital integration
- Industrial electronics
- Computer aided design
- Outer essential skills

Students will engage with local employers, fostering relationships via Engineering Education Scheme Wales, which provides an opportunity to develop a project that will solve an identified industrial problem.

Moving on:

Students following this programme of study can either enter higher education or seek employment in the digital technology/electronics area.



Hair and Beauty



There are Welsh speaking staff in this area.

Beauty Specialist Techniques (QCF)

Level 2 Diploma VTCT

Broadway, Tycoch Campus

Course length: one year

This diploma has been specifically designed to develop your practical skills. As part of the application process you will be required to complete an entry test and attend an interview. GCSE or equivalent in English, Maths and Science desirable (or currently working towards them).

What's involved:

Throughout the year you will develop your practical skills and work on clients in a commercial salon environment. Within the qualification you will develop a sound knowledge of health and safety, client care and communication and related knowledge of beauty therapy at Level 2.

Units include:

- Makeup
- Client care and communication
- Lash and brow treatments
- Health and safety
- Facial skin care
- Contribute to the running of a business
- Waxing, sugaring and threading techniques
- Display stock
- Manicure/pedicure
- Reception

Moving on:

This qualification may lead directly into employment in the beauty therapy industry as a junior beauty therapist in a salon or self-employment as a therapist. Alternatively, you may wish to apply for Level 3 Diploma in Beauty Therapy Treatments or Level 3 Complementary Therapies.

Beauty Therapy Treatments

Level 3

Diploma VTCT (QCF)

Broadway, Tycoch Campus

Course length: one year

The Level 3 Diploma in Beauty Therapy Treatments is a course that has been specifically designed to further develop your Level 2 practical beauty therapy skills. You attend college for 20 hours per week over 36 weeks.

What's involved:

Throughout the year you will work on clients in a commercial salon environment. Within the qualification you will develop a sound knowledge of health and safety, client care and communication, and related knowledge of beauty therapy at Level 3.

The units studied include:

- Facial and body electrotherapy treatments
- Body massage including pre-blended oils
- Self tanning
- Micro dermabrasion
- Individual permanent lashes
- Health and safety
- Anatomy and physiology
- Essential skills
- Working in the Beauty Industry

Moving on:

This qualification may lead directly into employment as a beauty therapist in a beauty salon/spa or self-employment. Alternatively, you may wish to apply for Level 3 Complementary Therapies or Level 4/5 HND in Spa Management.

Complementary Therapies

Level 3 Diploma VTCT

Broadway, Tycoch Campus

Course length: one year

What's involved:

This 36-week full time course includes the major use of holistic therapies for use in general practice.

You will study:

- Aromatherapy
- Reflexology
- Swedish massage
- Indian head massage
- On-site massage
- Anatomy and physiology, pathology
- Principles and practice of complementary therapies
- Business practice for complementary therapies
- Stone therapy

This course is suitable for mature students with a good general education. GCSE (or equivalent) desirable in English, Math and Science.

Moving on:

Upon successful completion you can progress onto part time HND Advanced Therapies and Spa Management. Employment opportunities can include health spas, salons, cruise liners, working abroad, etc.



Hairdressing NVQ (Under 19)

Level 1 Certificate

Broadway, Tycoch Campus

Course length: one year

This programme leads to a second year of study to gain a Level 2 Diploma in Hairdressing (NVQ).

What's involved:

During the year you will begin to develop hairdressing skills in shampooing and conditioning, blow drying and setting hair, cutting, colouring and related areas such as health and safety and client care.

Towards the end of the year you will work on clients in order to complete Level 1 assessments in these skills.

All students will work towards achieving an essential skills qualification in communications and IT.

Moving on:

NVQ Level 2 Diploma in Hairdressing or employment in a salon as an assistant.

Hairdressing NVQ (Workbased)

Level 1 Certificate

Diploma VTCT (QCF)

Kingsway Centre

Course length: six months

This introductory programme of study is designed for school leavers who wish to train as a hairdresser in a salon.

What's involved:

You will begin to develop hairdressing skills in shampooing and conditioning, blow drying and setting hair, colouring and related areas such as health and safety and client care.

Towards the end of the programme you will work on clients, in the salon, to complete assessments.

You will attend college one day per week with the rest of your week (four days) based in a salon.

Moving on:

NVQ Level 2 Diploma in Hairdressing (work based or full time) or employment in a salon as an assistant.

Hairdressing NVQ (Under 19 or Fast Track – Over 19)

Level 2 Diploma VTCT

Broadway, Tycoch Campus/
Kingsway Centre

Course length: one year

Elements of this course can be delivered through the medium of Welsh.

This programme of study follows on from the Level 1 Certificate course. It may also be taken as a one-year fast track programme by students over the age of 19 who do not have the Level 1 Certificate, enabling them to gain the Level 2 Diploma.

What's involved:

During the course you will develop your hairdressing skills and work on clients in a salon environment.

Assessments will be completed in the following areas:

- Health and safety
- Positive impression of yourself and your organisation
- Advise and consult with clients
- Shampoo, condition and treat the hair and scalp
- Change hair colour
- Style and finish hair
- Set and dress hair
- Cut hair

All students will work to achieve a customer service qualification and a Level 1 essential skills qualification in communication and IT.

Moving on:

NVQ Level 3 Diploma in Hairdressing or employment in a salon as a stylist.



Hairdressing NVQ (Work Based) Level 2 Diploma

Kingsway Centre
Course length: two years

This programme of study is for learners who wish to train as a hairdresser in a salon. School leavers who have completed the Level 1 Skill Build Programme can progress onto this course - other learners can come directly onto this course.

What's involved:

During the course you will develop your hairdressing skills and work on clients in a salon environment.

Assessment will be completed in the following areas:

- Health and safety
- Positive impression of yourself and your organisation
- Advise and consult with clients
- Shampoo, condition and treat the hair and scalp
- Change hair colour
- Style and finish hair
- Set and dress hair
- Cut hair
- Promote additional services or products to clients

Learners will also gain essential skills qualifications in IT , communications and numeracy.

Moving on:

NVQ Level 3 Diploma in hairdressing or employment in a salon as a stylist.

Hairdressing NVQ Level 3 Diploma Diploma VTCT (QCF)

Broadway/Kingsway Centre
Course length: one year

This one-year programme builds upon the Level 2 hairdressing qualification, enabling you to develop and enhance your hairdressing skills. You will attend college for 19 hours per week and you will spend your time in the salon and in the classroom.

What's involved:

During the year you will develop your new hairdressing skills and work on clients in a busy commercial salon environment and complete assessments in the following areas:

- Health and safety
- Consultation
- Creative cutting
- Planning promotional activities
- Creative colour techniques
- Colour correction

Work experience is built into the course and you will attend a salon one day per week for the duration of the course

Moving on:

Employment opportunities include working in a salon as a senior stylist, on cruise ships or becoming a salon owner.

Hairdressing NVQ (Work Based) Level 3 Diploma

Broadway, Tycoch Campus
Course length: one year

This programme of study is for learners who wish to build upon the Level 2 Hairdressing qualification, enabling you to develop and enhance your hairdressing skills. You will attend college one day a week, the rest of your week (four days) will be spent in a salon.

What's involved:

During your study you will develop your new hairdressing skills and work on clients in a busy commercial salon environment and complete assessments in the following areas:

- Health and safety
- Consultation
- Creative cutting
- Planning promotional activities
- Creative colour techniques
- Style and dress long hair
- Colour correction

All students will also work to complete essential skills Level 2 qualifications in communications and application of number.

You will have to have NVQ Level 2 Hairdressing, with good basic hairdressing skills and a good understanding of Level 2 hairdressing theory to undertake this course.

Moving on:

Employment opportunities include working in a salon as a senior stylist, on cruise ships or becoming a salon owner.



Health and Childcare



There are Welsh speaking staff in this area.

Children's Care, Learning and Development Foundation Apprenticeship Level 2 BTEC Diploma Tycoch Campus

Course length: one year

This programme leads to a nationally recognised qualification. It introduces you to an occupational area, enabling you to develop the knowledge, skills and understanding required of those working in this sector.

What's involved:

This course provides the opportunity to develop occupational competence for working in the CCLD sector, through attendance and assessment in the work-place. You will need to be employed in the childcare sector for a minimum of 16 hours per week.

The course covers development from 0-19 years, however, you will need to be working with children in the childcare rather than the education sector.

Moving on:

Students will be able to progress to the Level 3 Diploma in Children's Care, Learning and Development or the Level 3 Advanced Apprenticeship.

Employment opportunities include:

- Nursery nurse
- Nursery assistant
- Play group assistant
- Cylch Meithrin assistant

Children's Care, Learning and Development Apprenticeship Level 3 BTEC Diploma Tycoch Campus

Course length: two years

This programme leads to a nationally recognised qualification. It enables you to continue to develop the knowledge, skills and understanding required of those working in this sector.

What's involved:

This course provides the opportunity to further develop your occupational competence of working in the CCLD sector, through attendance and assessment in the work-place. You will need to be employed in a relevant childcare setting for a minimum of 20 hours per week.

The course covers child development from 0-19 years, however, you will need to be working with children in the childcare rather than the education sector.

Moving on:

Students will be able to progress to the Level 5 Diploma in Leadership for Children's Care, Learning and Development (Advanced Practice).

Health & Social Care Foundation Apprenticeship (Employer Based) Level 2 Diploma Gorseinon Campus

Course length: 15 months

Work place assessment can be taken through the medium of Welsh.

What's involved:

The diploma allows learners to build on their work-based knowledge as well as the technical/principles. It provides a broad base of understanding, whilst allowing learners to also focus on the following specialist areas:

- Employment rights and responsibilities
- Communication and application of number in care settings
- Health and wellbeing

Moving on:

This programme gives learners a wide choice of progression options into further study or training. Successful completion equips learners to move on to a degree course, including nursing. It will also give access to Higher National Diploma or QCF courses Levels 3 to 5. Progression to the Level 3 Diploma in Health and Social Care (Apprenticeship) is dependent upon the employer's approval as the learner must be employed in a senior position.



Health & Social Care Apprenticeship (Employer Based) Level 3 Diploma

Gorseinon Campus
Course length: 15 months

This diploma allows learners to build on their work-based knowledge as well as the technical/principles.

What's involved:

It provides a broad base of understanding, whilst allowing learners to also focus on the following specialist areas:

- Employment rights and responsibilities
- Communication and application of number in care settings
- Health and wellbeing

Moving on:

This programme gives learners a wide choice of progression options into further study or training. Successful completion equips learners to move on to a degree course, including nursing. It will also give access to Higher National Diploma or QCF courses Levels 3 to 5. Progression to Level 5 is dependent upon the employer's approval for the learner to be employed as an assistant home manager or deputy manager, or a similar role.

Introduction to Health and Social Care and Early Years and Childcare Level 1 BTEC Certificate

Tycoch Campus
Course length: one year

Elements of this course can be delivered through the medium of Welsh.

This qualification offers an introduction to the vocational sector. It is designed to develop the knowledge and understanding required by the health and social care, early years and childcare sector. It gives the learner the opportunity to gain an awareness of personal skills and attributes that are required for those considering working in these sectors. Learners also have the opportunity to develop the personal skills and attributes that will form the basis of successful study at higher levels.

Some qualifications at Entry Level 3 or limited achievement at GCSE, grades D-G, required to undertake this course.

What's involved:

Study units include:

- Understand the range of service provision and roles
- Awareness of health and safety
- Protection and safeguarding adults and children
- Awareness of inclusion and disability
- Communication
- Human growth and development
- Physical care of babies and young children
- Understanding the importance of leisure and social activities
- Promoting healthy eating

You will also study essential skills Level 1 in literacy and numeracy and the Post 16 Level 1 Diploma Welsh Baccalaureate. Students are also required to undertake work placements which consist of residential and nursing care, family centres and voluntary organisations.

CYMRU
BAGLORIAETH CYMRU | WELSH
BACCALAUREATE
QUALIFICATION

Moving on:

Progression possible to a Level 2 course.



Children's Care, Learning and Development Level 2 BTEC Diploma

Gorseinon/Tycoch Campus
Course length: one year

This is a professional Level 2 course that covers working with children and young people from 0 to 16 years of age.

What's involved:

Learners will study a number of modules related to the essential knowledge required for working in this sector. They will also undertake compulsory work placements for a minimum of 300 hours in a range of suitable childcare settings such as day nurseries or primary schools.

The course affords learners the opportunity to develop the personal skills and attributes that will form the basis of successful study at higher levels.

CYMRU CYMRU
BAGLORIAETH CYMRU WELSH BACCALAUREATE QUALIFICATION

Students at Gorseinon will be offered the opportunity to study the Welsh Bacalaureate alongside this qualification.

Moving on:

Students will be able to progress to BTEC Level 3 Certificate in Children's Care, Learning and Development or Level 3 in Health and Social Care. Some students may take up apprenticeships or part time study at Level 3 in Children's Care, Learning and Development.

Children's Care, Learning and Development Level 3 BTEC Certificate/Diploma

Gorseinon/Tycoch Campus
Course length: two years

This is a professional Level 3 course that covers working with children from 0 to 8 years of age.

What's involved:

Students will study a number of modules related to the essential knowledge required for working in this sector. Students will undertake compulsory work placement (minimum of 800 hours) in a range of childcare settings such as day nurseries or primary schools.

BTEC Certificate

Learners will be given the opportunity to develop the personal skills and attributes that will form the basis of successful study at higher levels.

CYMRU CYMRU
BAGLORIAETH CYMRU WELSH BACCALAUREATE QUALIFICATION

Students at Tycoch will be offered the opportunity to study the Welsh Bacalaureate alongside this qualification.

BTEC Diploma

Learners will have the opportunity to develop the personal skills and attributes that will form the basis of successful study at higher levels.

Moving on:

Students will be able to progress to higher education or enter the world of work.



Health and Social Care Level 2 BTEC Diploma

Tycoch Campus

Course length: one year

Elements of this course can be delivered through the medium of Welsh.

The course is designed to prepare students to work in a Health/Social Care setting and leads to a nationally recognised vocational qualification. To undertake this course students will need at least two GCSEs at C grade or above plus a portfolio of D grades (English Language preferred at C grade) or achievement at Level 1 with 90% attendance and supported by placement and tutor reports.

What's involved:

A range of Health and Social Care related units are studied which introduce you to this occupational area and give you an insight into the diverse nature of this sector. You will develop skills and extend your knowledge and understanding, which will enable you to work in Health and Social Care.

Study units include:

- Communication in Health and Social Care
- Individual Rights in Health and Social Care
- Individual Needs in Health and Social Care
- Ensuring Safe Environments in Health and Social Care
- Vocational Experience in Health and Social Care
- Anatomy and Physiology in Health and Social Care
- Human Lifespan Development
- The Impact of Diet on Health

You will also study literacy and numeracy modules which will include Essential Skills Wales Level 2 and other related qualifications. Students are also required to undertake work placements which consist of residential and nursing care, family centres and voluntary organisations.

Moving on:

Students will be able to progress on to the two year Level 3 Diploma in Health and Social Care or Children's Care, Learning and Development.

Health and Social Care Level 2 BTEC Diploma

Gorseinon Campus

Course length: one year

Elements of this course can be delivered through the medium of Welsh.

This programme leads to a nationally recognised vocational qualification, broadly equivalent to four GCSEs, and provides you with an insight into the diverse nature of this sector.

What's involved:

You will develop a range of skills and techniques, personal skills and attributes essential for successful performance in working life. A range of health and social care related units is studied which introduces you to this occupational area.

As the course is designed to prepare students to work in health/social care related careers, vocational practice is an important and compulsory feature and it is recommended that you undertake 60 hours of work placement. Students can choose from a variety of work-place settings.

CYHRWYSTER
BAGLORIAETH CYMRU | WELSH
BACCALAUREATE
QUALIFICATION

The Welsh Baccalaureate Intermediate Level 2 is run alongside this course and will help to broaden knowledge and skills.

You will spend at least four days in college each week, and attend a block placement each term.

Two GCSE subjects grade C or above is required for the course and you will need to demonstrate a genuine interest in people. Students need to be reliable, honest, trustworthy, well motivated and self-reliant.

Moving on:

Students will be able to progress to employment in the sector, in a supervised role. Progression could also be to further study, such as the BTEC Level 3 Diploma in Health and Social Care or Children's Care, Learning and Development.

Health and Social Care Level 3 BTEC Diploma/ Extended Diploma

Gorseinon Campus

Course length: two years

Elements of this course can be delivered through the medium of Welsh.

The course is designed to prepare students to work in health/social care related careers in a professional capacity and a range of health and social care related units are studied. The course examines a wide variety of current and topical issues within its structure which demonstrate the diverse nature of the sector.

What's involved:

As the course is designed to prepare students to work in health/social care related careers, vocational practice is an important and compulsory feature.

Students will need a genuine interest in people and should demonstrate commitment and enthusiasm. Students need to be reliable, honest, trustworthy, well-motivated and self-reliant.

BTEC Diploma

This programme leads to a nationally recognised vocational qualification equivalent to two A Levels.

Moving on:

Students may wish to gain the qualification in order to enter a specialist area of employment or to progress to higher education to study for a foundation degree or the HND Health and Social Care.

BTEC Extended Diploma

This programme leads to a nationally recognised vocational qualification equivalent to three A Levels.

CYHRWYSTER
BAGLORIAETH CYMRU | WELSH
BACCALAUREATE
QUALIFICATION

The Welsh Baccalaureate Advanced Level 3 is offered alongside this course at Gorseinon.

Moving on:

Health/social care related degrees in, for example, social work, occupational therapy, nursing, midwifery, radiography, criminology, environmental health and probation or HND Health and Social Care.

Health and Social Care Level 3 BTEC Diploma/ Extended Diploma

Tycoch Campus
Course length: two years

Elements of this course can be delivered through the medium of Welsh.

These courses are designed to prepare students to work in health/social care related careers in a professional capacity. The courses examine a wide variety of current and topical issues within their structure which demonstrate the diverse nature of the sector.

What's involved:

A range of health and social care related units are studied. You will also study literacy and numeracy modules which will include Essential Skills Wales level 3 and other related qualifications. Students are also required to undertake work placements. Placements consist of residential and nursing care, family centres and voluntary organisations.

BTEC Diploma

At least four GCSEs at C grade or above, including English Language, or a Merit/Distinction profile at Level 2 will be required to undertake this course.

Students will also complete the Advanced Diploma Welsh Baccalaureate.

CYMRU
BAGLORIAETH
CYMRU | WELSH
BACCALAUREATE
QUALIFICATION

Moving on:

Students may wish to gain the qualification in order to enter a specialist area of employment or to progress to higher education to study for a foundation degree or the HND Health and Social Care.

BTEC Extended Diploma

This programme leads to a nationally recognised vocational qualification equivalent to 360 UCAS points. Students will need at least 5 GCSEs at C grade or above, including English, Mathematics and Science, in order to undertake this course.

Moving on:

Health/social care related degrees in, for example, social work, occupational therapy, nursing, midwifery, radiography, criminology, environmental health and probation or HND Health and Social Care.



Alex Atkins received the Outstanding Vocational Student of the Year – Services to Industry and People award for her work and commitment while on the Diploma in Health and Social Care course, while also volunteering for several local organisations. Alex was invited to address an audience at an International Women's Day event and to speak on behalf of Welsh young carers at the highest levels, including the Welsh Government. She has now gone on to higher education to gain a qualification in Youth & Community Work.

In recognition of her extraordinary achievements and contribution to society, Alex also received the overall award for the Inspirational Student of the Year 2013.



Independent Living



Cymraeg

There are Welsh speaking staff in this area.

Life and Independent Skills (IFE)

Entry Level OCR Diploma Life and Living Skills

Tycoch Campus
Course length: one year

This course offers an introduction to college at pre-entry and entry levels.

What's involved:

Learners are encouraged to develop independent skills and continue to develop their learning in a range of tasks including cookery, art and design, engineering, personal presentation and sport.

The course offers students an opportunity to experience college life before moving on to an appropriate progression route. There are no formal entry requirements, however an informal interview will be held.

Moving on:

Year 1 - Introduction to Further Education (IFE).

Subsequent years will depend upon each learner's individual needs - opportunities include progressing onto Work Skills or Life Skills courses.

Contact:

Mandy Heskins 01792 284311

Skills for Adulthood (SA)

Pre Entry - Entry 2

ASDAN Life Skills and Personal Progress

Tycoch Campus
Course length: one year

This course offers the opportunity to continue to develop personal, social and independent living skills through the Entry Level Diploma in ASDAN Life Skills.

What's involved:

Learners will also develop their communication, literacy, numeracy and ICT, as well as achieving a real life experience of working in a retail environment. In addition to this, learners will have the opportunity to participate in a supported travel programme.

There are no formal entry requirements, however an informal interview will be held.

Moving on:

There are three options available:

- Part time provision - up to two days, where the learners can choose their options from a number of ASDAN or OCN units
- Entry 3 Pathways course - four days a week with one day on the NEET programme
- Social and Work Development in Fforestfach

Contact:

Mandy Heskins 01792 284311

Pathways

Entry 3

Diploma ASDAN Life Skills

Tycoch Campus
Course length: one year

The Pathways course is run in conjunction with the Coastal project in Fforestfach, where learners have the opportunity to explore supported work options, such as working in Victoria Park Kiosk.

What's involved:

This course offers the opportunity to continue to develop personal, social and independent living skills through the Entry Level Diploma in ASDAN Life Skills. Learners will also develop their communication, literacy, numeracy and ICT, as well as achieving a real life experience of working in a retail environment. In addition to this, learners will have the opportunity to participate in a supported travel programme.

There are no formal entry requirements, however an informal interview will be held. Learners will have completed the ASDAN Life Skills at Entry Level 2.

Moving on:

There are two options available:

- Part time provision - up to two days, where the learners can choose their options from a number of ASDAN or OCN units
- Work development in Fforestfach - supported employment

Contact:

Mandy Heskins 01792 284311

Independent Living Skills students have opened their own general store - Bits and Bobs - at the Tycoch campus. The shop is run by the students as a business and they are responsible for handling money, ordering goods, stocktaking and pricing. There are all kinds of goods on sale, including coffee and tea, washing up liquid, books, DVDs and stationery. Students also make seasonal items to sell, such as Christmas cards.

Work Skills (Work Preparation)

Entry 2 and 3

Tycoch Campus

Course length: one or two years

This course offers learners opportunities to identify skills needed to work in the local community.

What's involved:

Learners develop necessary work skills through group work and internal work placements and will be working towards gaining Employability, Literacy, Numeracy and IT qualifications. They may have opportunities in sport, catering, engineering and personal presentation while continuing to develop independent living skills, e.g. travelling independently and personal living skills.

Learners will have progressed from the Life and Independence E1 (IFE) courses and shown a competency in Literacy and Numeracy.

Moving on:

It is intended that learners will have worked towards gaining successful employment or opportunities can be explored in supported work placements.

Contact:

Tom Snelgrove 01792 284215

Work Skills (STTEP – Students Transition Towards Employment Progression)

Entry 3 Progression course

Tycoch Campus

Course length: one year

This course offers learners opportunities to identify skills needed to work in the local community and implement these skills in a real work setting.

What's involved:

Learners will have the opportunity to develop necessary work skills through external work placements in places such as ASDA, Llys Nini, Tesco, Swansea University and The Dragon Hotel. They will be working towards gaining Employability, Literacy, Numeracy and IT qualifications and also have opportunities in sport, catering, engineering and personal presentation as they could find this to be a pathway into a Level 1 course.

Learners will have progressed from the Entry 1 and Entry 2 courses within the ILS area.

Moving on:

It is intended that learners will have worked towards gaining successful employment or opportunities can be explored in supported work placements. We have gained strong links with the Disability Employment Adviser in the Job Centre and agencies such as The Shaw Trust.

Contact:

Tom Snelgrove 01792 284215

Vocational and Pre Foundation (VAC and PF) Entry 3 City & Guilds Personal and Social Development

Tycoch Campus

Course length: one year

The course offers learners an introduction to college and opportunities to sample various vocational areas, from which learners will be able to make an informed decision on future progression routes.

What's involved:

Learners will further develop essential skills, communication, number and IT, and also work towards gaining a City & Guilds Entry 3 qualification in Employability and Personal Development.

There are no formal entry requirements for these courses however acceptance on the course is dependent on successful interview.

Moving on:

On successful completion, learners will have the opportunity to apply to progress onto Level 1 provision on a suitable chosen pathway.

Where appropriate, suitable employment will be sought with support from specialist careers advisers and outside agencies.

Contact:

Tom Snelgrove 01792 284215

Part Time Courses

There are also a number of part time Independent Living Courses for adults with learning disabilities. Courses are delivered at the Tycoch campus and at day centres across Swansea.

For further details call Helen Fencott 01792 284116 or look at our website www.gowercollegeswansea.ac.uk

OPEN TO THE PUBLIC

BROADWAY

HAIR, BEAUTY & HOLISTICS CENTRE

01792 284049 www.gowercollegeswansea.ac.uk

SPOIL YOURSELF NOT YOUR BANK BALANCE!



Gower College Swansea
Coleg Gŵyr Abertawe

As part of Gower College Swansea, all our treatments are carried out by students and supervised by professional practitioners.

Therapists are either first year students studying at Level 2 or second year students on Level 3 courses.

Because we are a teaching centre, we are only open during term time and some treatments are only available at certain times of the year due to the nature of the courses. Appointments need to be booked in advance so please ring ahead to check that the treatment you want is available.

BEAUTY

- *Facials*
- *Oxygen Therapy*
- *Microdermabrasions*
- *CACI Facial Toning*
- *Hair Removal*
- *Lash and Brow Treatments*
- *Manicures and Pedicures*
- *Corrective Body Treatments*
- *St Tropez Spray Tanning*
- *Botox*

HOLISTIC THERAPIES

and Spa Treatments

- *Crystal Therapy*
- *Hopi Ear Candling*
- *Ayurvedic Treatment*
- *Hydrotherapy Mineral Bath*
- *Massage Therapies*
- *Reiki*
- *Dry Floatation Therapy*
- *Sauna*
- *Steam Room*

HAIRDRESSING

- *Cutting and Styling*
- *Colouring*
- *Special Occasion Hair*
- *Barbering*



www.facebook.com/BroadwayHairBeautyandHolisticCentre

Media



Creative Media Level 1 BTEC Diploma

Llwyn y Bryn Campus
Course length: one year

This course forms a foundation in the creative industries.

What's involved:

Students study the major creative subjects of art and media throughout the year alongside other important life skills such as ICT, literacy and numeracy.

This course is taught in a very supportive manner and recognises that students often flourish in an environment which is different from school. Students will take part in music videos, art and photography projects designed to build personal, creative and technical skills.

Moving on:

Students generally choose to specialise in one of the creative pathways and progress onto a Level 2 Diploma course in art or media.

Creative Media Production Level 2 BTEC Diploma

Gorseinon Campus
Course length: one year

This course is designed to introduce students to the technological, creative and personal skills involved in working in the media industries.

What's involved:

Students will develop knowledge and skills for media careers and work towards the production of examples of a range of media products such as video, audio and animation.

You will gradually build up a range of grades from assignments that you complete, many of which are practical, hands-on forms of assessment, and are designed to replicate working practices in sectors of the media industry.

Moving on:

A majority of students progress to Level 3 courses in Media-related subjects, such as the Extended Diploma in Creative Media Production.

Creative Media Production Level 3 BTEC Diploma

Gorseinon Campus
Course length: two years

The qualification is equivalent to two A Levels and allows students the opportunity to study 12 units. Students also have the opportunity to study additional subjects alongside.

BTEC Extended Diploma

The qualification is equivalent to three A Levels. It allows students the opportunity to study 18 units.

What's involved:

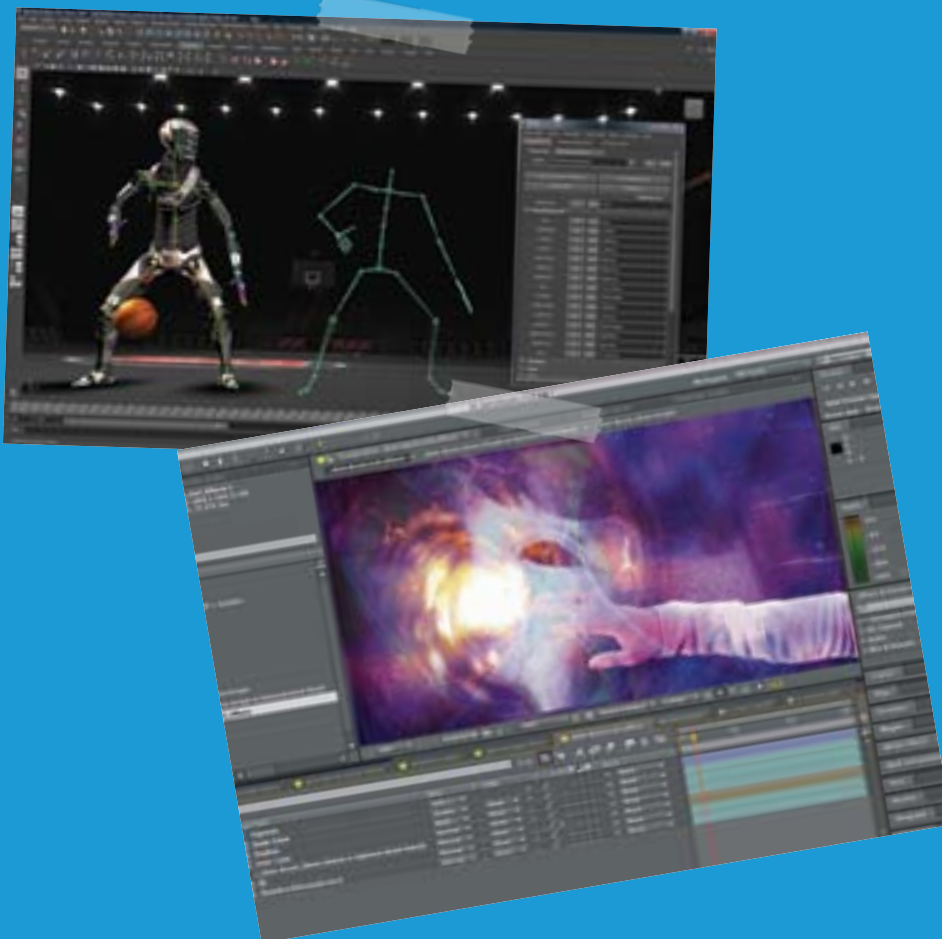
Students produce a wide variety of creative outcomes, developing their understanding of photography, graphics, video, animation, sound and special effects via digital and traditionally based workshop sessions, seminars, lectures and individual research tasks.

Students will study an additional qualification in image capture and also have the option to become an Adobe Certified Associate (Photoshop CS5).

Moving on:

Students who successfully complete the qualification will be well equipped to move on to BA (Hons) or BTEC Higher National Diploma course programmes, or to progress to Level 4 and 5 BTEC qualifications and other higher education qualifications.

The qualification also offers progression opportunities in employment within the rapidly expanding creative media sector: advertising, TV/film, animation, computer games design, multimedia design, photography, recording industry.



Motor Vehicle



There are Welsh speaking staff in this area.

Apprenticeships

Motor Vehicle Maintenance and Repair Foundation Apprenticeships Level 2 VRQ 4290 Diploma Tycoch Campus **Course length: two years**

An intermediate level course in motor vehicle maintenance and repair, in which learners will study the principles of mechanical and electronic systems used in motor vehicle technology whilst undertaking many repair tasks.

What's involved:

The course is designed to prepare learners for a career in the motor vehicle service and repair industry and offers a standardised approach for the delivery and assessment of the knowledge and skills requirements. It also provides the knowledge requirements for its related VCQ and forms the knowledge component of the IMI SSC Maintenance and Repair Apprenticeship Framework (for Light Vehicle).

Moving on:

Successful learners who are also following an apprenticeship programme or secured the necessary work experience may have the opportunity to progress on to the VRQ Level 3 in Motor Vehicle Maintenance and Repair.

Motor Vehicle Maintenance and Repair Apprenticeships Level 3 VRQ 4290 Diploma Gorseinon Campus **Course length: one year**

An advanced level course in motor vehicle maintenance and repair, in which students will study the more complex principles of mechanical and electronic systems used in motor vehicle technology whilst undertaking many diagnostic and repair tasks.

What's involved:

The course is designed to support learners who have progressed to a more technical level in the motor vehicle maintenance and repair industry and offers a standardised approach for the delivery and assessment of the knowledge and skills requirements. It also provides the knowledge requirements for its related VCQ and forms the knowledge component of the IMI SSC Maintenance and Repair Apprenticeship Framework (for Light Vehicle).

Moving on:

Successful learners who are also following an apprenticeship programme will have secured the necessary underpinning knowledge needed to further complete the associated VCQ. Opportunities for progression into associated higher education programmes will also be available at the nominated universities' discretion.

Introduction to Vehicle Systems Maintenance Level 1 Foundation Tycoch Campus **Course length: one year**

Students will study the basic principles of mechanical and electrical systems used in motor vehicle technology whilst developing their core hand skills.

What's involved:

The course is designed to give learners an insight into a career in the motor vehicle service and repair industry and encourages learners to undertake many maintenance and repair tasks. Students will also study for a qualification in Performing Engineering Operations (PEO).

The course is delivered through practical demonstrations which are supported with realistic working tasks.

Applicants will need to demonstrate that they have a keen interest in the subject and have followed a structured educational programme. Alternatively, applicants may be required to undertake an aptitude test prior to entry.

Moving on:

Successful learners may have the opportunity to further their studies and progress onto the Level 2 VRQ 4290-11 programme.



Vehicle Maintenance and Repair

Level 1 429011 Diploma

Gorseinon Campus

Course length: one year

Elements of this course can be delivered through the medium of Welsh.

The course has been designed to give students an understanding of the electrical and mechanical systems that are used on a motor vehicle in terms of operation, design and maintenance.

What's involved:

The learner will gain an insight into the motor industry by completing a number of set tasks, designed by the awarding body, along with multi-choice examinations to test knowledge. A number of supplementary tasks have been embedded into the programme to enhance students' learning in the workshop. These qualifications were developed in collaboration with the Institute of the Motor Industry (IMI), the Sector Skills Council for the Automotive Retail Industry.

Moving on:

Successful learners may have the opportunity to further their studies and progress onto the Level 2 VRQ 429012 programme.



Motor Vehicle Maintenance and Repair

Level 1 & 2 VRQ 4290 Diploma

Tycoch Campus

Course length: two years

The Level 1/2 Diploma course has been designed to give students an understanding of the electrical and mechanical systems that are used on a motor vehicle in terms of operation, design and maintenance.

What's involved:

The course has been designed to give the learner an insight into the motor industry by completing a number of set tasks, along with multi-choice examinations to test knowledge.

During workshop sessions diagnostic equipment is included into the assessment process. Embedded into the programme are essential skills that will develop the students' numeracy, communication and IT skills to build confidence both in the classroom and workshop.

A number of supplementary tasks are also included which enhance the students' learning. These qualifications were developed in collaboration with the Institute of the Motor Industry (IMI), the Sector Skills Council for the Automotive Retail Industry.

Appropriate GCSEs at grade D or above required to undertake this course and a formal interview is also essential to review experiences.

Moving on:

Successful learners may have the opportunity to further their studies and progress onto the Level 3 VRQ 4290 programme or transfer on to the Foundation Modern Apprenticeship to study for the VCQ 4270 Level 2.

Alternatively, with the addition of the required mathematics, learners have the opportunity to progress onto the Level 3 BTEC Diploma in Vehicle Technology to accrue UCAS application points.

Vehicle Maintenance and Repair

Level 2 429012 Diploma

Gorseinon Campus

Course length: one year

This course has been designed to give students an understanding of the electrical and mechanical systems used on a motor vehicle in terms of operation, design and maintenance.

What's involved:

The learner will gain an insight into the motor industry by completing a number of set tasks, designed by the awarding body, along with multi-choice examinations to test knowledge.

Workshop diagnostic equipment is included in the assessment process. A number of supplementary tasks have been embedded into the programme to enhance students' learning. These qualifications were developed in collaboration with the Institute of the Motor Industry (IMI), the Sector Skills Council for the Automotive Retail Industry.

Moving on:

Successful learners may have the opportunity to further their studies and progress onto the Level 3 VRQ 4290 programme or transfer onto the Foundation Apprenticeship to study for the VCQ 4270 Level 2.

Vehicle Maintenance and Repair

Level 3 429013 Diploma

Gorseinon Campus

Course length: one year

This course has been designed to give students an understanding of the electrical and mechanical systems used on a motor vehicle in terms of operation, design and maintenance.

What's involved:

The learner will gain an insight into the motor industry by completing a number of set tasks, designed by the awarding body, along with multi-choice examinations to test knowledge.

A number of supplementary tasks have been embedded into the programme to enhance students' learning in the workshop. These qualifications were developed in collaboration with the Institute of the Motor Industry (IMI), the Sector Skills Council for the Automotive Retail Industry, and other awarding organisations.

Moving on:

Successful learners will have the opportunity to transfer onto the Level 3 VCQ programme (4270) apprenticeship route, seek employment or study for a HND at Swansea Metropolitan University.

Vehicle Technology

Level 3 BTEC Subsidiary Diploma/Diploma

Tycoch Campus

Course length: one or two years

This course is designed to give learners a sound technical and academic background which would give them access to a wide range of careers associated with the road transport and automobile engineering industry.

What's involved:

Within this advanced level course in motor vehicle engineering, learners will study the more complex principles of engineering systems used in motor vehicle technology and carry out repair and diagnostic activities on the associated systems. Although primarily designed as a development programme to provide progression opportunities within the same cognate or related areas of study within universities and other institutions, they also give learners the knowledge, understanding and skills needed to prepare for employment.

Moving on:

Progression from the programme could be into employment, where learners will take the opportunity to complete the associated VCQ before progressing onto the Level 3 SSC framework via a day release programme. Alternatively learners may wish to use the qualification and the associated UCAS points to continue their studies on higher education programmes in the same or a related sector.



Anthony Nkwazi achieved exceptionally high grades on the BTEC Level 3 in Vehicle Technology course, aspiring to submit levels of presentation worthy of any publication, and received the International Student of the Year award 2013.

Performing Arts and Music



Music

Level 2 BTEC Diploma

Llwyn y Bryn Campus

Course length: one year

This course is designed for students aged 16 plus who have an interest in music. Entry to the course is by interview and you will be asked to take part in an audition

GCSE experience in music would be an advantage. Students who have some performing skill, either as a solo artist or as part of a band, would be well placed to apply.

What's involved:

This course is designed to develop knowledge and practical skills in music performance and music production.

The skills gained in this course cover all areas of music, from composition using music software, recording technologies, live performance technologies, solo and ensemble performances, through to an understanding of the music industry and the various jobs on offer in this ever-expanding industry.

As with all vocational courses, Level 2 Music has a very practical focus and students will take part in a variety of performances within college, culminating in a major performance at a local music venue.

Studio fees of £25 will be charged for this course.

Moving on:

The qualification is equivalent to four GCSEs at grades A-C.

Students who successfully complete this course have a very high rate of progression onto the BTEC Diploma/Extended Diploma in Music. Alternatively, students could access a range of courses at Level 3. Students may also seek employment in a variety of roles from production assistant to media runners and venue support.



Music Performance

Level 3 BTEC BTEC Diploma/ Extended Diploma

Llwyn y Bryn Campus

Course length: two years

Diploma:

The first year of the course is available as a stand-alone Diploma qualification. It is designed to be as practical as possible, whilst also achieving an academic qualification equivalent to two A Levels. Entry to the course is by interview and audition. GCSE Music would be an advantage and students who have experience of live performance would be well placed to apply.

What's involved:

The Diploma course gives students a foundation in all aspects of music performance and production. Students will spend the majority of their time working on solo instrumental/vocal techniques, developing an understanding of ensemble work and live performance, and studying music from the last 100 years. The course provides an understanding of Live Sound, events management, studio recording technologies, computer-based music sequencing and composition.

Extended Diploma:

The second year of the course develops the skills covered in the Diploma with more detailed and academic based units. The Extended Diploma is equivalent to 3 A Levels.

What's involved:

Students will spend the majority of their time developing the technical skills and repertoire for a major music event. They will organise and manage the event, developing event management skills and providing technical support. Students will also develop a comprehensive understanding of the music industry.

A studio fee of £50 will be paid in the first year.

Moving on:

Students who successfully complete the one year Diploma will be offered a place on the Extended Diploma. The college has forged strong links with higher education providers and progression rates are very high onto courses such as BA Music/BSc Music Technology. Past students are working in a variety of roles such as studio engineering, music journalism and professional musicians.

Performing Arts

Level 2 BTEC Diploma

Gorseinon Campus

Course length: one year

This course is designed for students aged 16 plus who have an interest in the performing arts. Entry to the course is by interview and you may be asked to take part in an audition.

GCSE experience in dance, drama or music would be an advantage. Students who have taken part in school productions or local dance/drama groups would be well placed to apply.

What's involved:

The course is designed to develop knowledge and skills in a range of subjects including dance, drama and singing. Students will also learn about the variety of jobs available in the industry.

The course has a practical focus and students will take part in a variety of performance projects. In the past the work has included *Our Day Out*, *Two*, *A Child's Christmas in Wales*, *Lord of the Flies* and various dance performances. Students also tour a production to the local community as part of their final project.

Course fees of £75 cover theatre trips and workshops.

Moving on:

The course is equivalent to four GCSEs grades AC.

Students who successfully complete the course will be in a position to progress to the BTEC Extended Diploma in Performing Arts. Alternatively, students could access a range of courses at Level 3.



Performing Arts Level 3 BTEC Extended Diploma

Gorseinon Campus

Course length: two years

This is an exciting and very popular course, designed to provide students with a realistic and demanding training in all facets of performance.

What's involved:

Students will be guided into study pathways in which college staff feel the individual will excel and, as a consequence, be prepared for their chosen career in the very competitive world of performing arts. Performance techniques in acting, singing and movement will be developed. Although the course is largely practical, most units have a written element.

Entry to the course is by interview and you may be asked to take part in an audition. Qualifications in drama, dance and music are desirable - where students have followed a Level 2 Performing Arts course, a distinction profile will be expected. A proven interest and experience in the performing arts is required and membership of a non-school-based performance group is recommended.

Visiting speakers and workshop leaders further enhance this nationally acclaimed course.

Course fees of £75 cover theatre trips and workshops.

Moving on:

Students have been highly successful in securing places at university and in specialist drama, dance and musical theatre colleges - these include: RADA, Arts Ed., London Contemporary Dance School, Guildhall, LAMDA, RWCMD, GSA, Laban Centre.

Many students progress to non performance-based careers in teaching and arts administration.

Performing Arts (Acting) Level 3 BTEC Diploma (90 Credit)

Gorseinon Campus

Course length: one year

This course is designed for students aged 18 plus who have completed a three A Level programme, which includes Drama, or an Extended Diploma in Performing Arts. Students accepted on this course should be aiming to apply to specialist drama colleges or university. Entry to the course is by interview and an audition.

What's involved:

Students on this intensive course will:

- further develop a range of acting, voice and movement skills
- be assisted in their preparation for auditions
- engage in a variety of performance projects in professional venues
- work with professional theatre directors
- attend a range of theatre performances

Recent productions have included Smile Asylum, Caucasian Chalk Circle, Road and Hamlet.

Course fees of £100 cover workshops and master classes with industry professionals.

Moving on:

Graduates of this course have progressed to a number of nationally acclaimed colleges and universities including Arts. Ed., Bristol Old Vic, Royal Welsh College of Music and Drama, RADA, E15, LAMDA, Mountview, Exeter University, as well as progressing to professional theatre and television work.

Performing Arts (Dance) Level 3 BTEC Diploma (90 Credit)

Gorseinon Campus

Course length: one year

This course is designed for students aged 18 plus who have completed a three A Level programme, which includes Dance, or an Extended Diploma in Performing Arts. Students accepted on this course should be aiming to apply to specialist dance colleges or university. Entry to the course is by interview and an audition.

What's involved:

Students on this intensive course will:

- further develop a range of Acting, Voice and Movement skills
- be assisted in their preparation for auditions for specialist Dance or Music Theatre colleges
- perform in a range of professional venues.
- work with professional dancers and choreographers
- attend a range of performances, both regionally and nationally

Course fees of £200 cover workshops, visits and master classes with industry professionals.

Moving on:

Students who have successfully completed similar training at the college have progressed to: Trinity Laban Conservatoire of Music & Dance, London Contemporary Dance School, Arts Ed, Laine Theatre Arts, The Urdang Academy, Bath Spa University, Chichester University and University of Roehampton.

Performing Arts ACADEMY

The Performing Arts Academy activities give students the opportunity to enhance their standards of performance through working with specialist staff in a range of performing arts disciplines.

- Drama
- Dance
- Orchestra
- Singing
- Classical Ballet
- Jazz Dance
- Audition Preparation

Technical Theatre Level 2 BTEC Diploma

Gorseinon Campus
Course length: one year

Studying towards a qualification in production arts, this one year course is aimed at providing students with a grounding in production for theatre. Students would normally be expected to have one GCSE at grade C, supported by a number at grade D or above.

What's involved:

Students follow a generic course that looks at the technical, stage management and design aspects of the backstage world. Units also cover the theoretical study of the performing arts.

Course fees of £75 cover theatre trips and workshops.

Moving on:

The course is equivalent to four GCSE grades A-C.

Students who successfully complete the course will be able to progress on to the BTEC Extended Diploma in Technical Theatre or another Level 3 course.

Technical Theatre Level 3 BTEC Diploma

Gorseinon Campus
Course length: one year

Leading towards a qualification in production arts, this one-year course is designed for students aged 18 plus who wish to spend a year of intensive training in all aspects of production.

What's involved:

The course follows a similar path to the Extended Diploma, providing a variety of practical 'hands-on' experiences.

Previous students have used the experience to develop a portfolio of evidence used whilst applying to specialist colleges.

Course fees of £75 cover theatre trips and workshops.

Moving on:

Students who have completed the vocational course in technical theatre have been highly successful in securing places in specialist drama colleges. Many have gone on to work professionally as stage managers, costume designers, lighting/sound designers. Some have moved straight into the industry, finding employment in professional venues as technicians.

Technical Theatre Level 3 BTEC Extended Diploma

Gorseinon Campus
Course length: two years

Leading to a qualification in production arts, this course is aimed at providing students with realistic yet demanding training in all areas of production for theatre.

Some experience in backstage work is required and membership of a youth theatre group is strongly recommended.

What's involved:

Students follow a generic course that looks at lighting, sound, stage management and design. Units also cover arts administration and a theoretical study of the performing arts. The course offers a range of performance project work, both at college and in outside venues. Recent performances include Moll Flanders, Grimm Tales, Murder in the Cathedral and Side By Side.

Students need to exhibit a proven interest in this subject area through involvement in school productions and/or other performing arts based activities.

Course fees of £75 cover theatre trips and workshops.

Moving on:

Students who have completed the vocational course in technical theatre have been highly successful in securing places in specialist drama colleges, including Guildford School of Acting and RADA.

Many have gone on to work professionally as stage managers, costume designers and lighting/sound designers in such places as the RSC and The National Theatre. Some have moved straight into the industry, finding employment in professional venues as technicians.



Public Services



There are Welsh speaking staff in this area.

Public Services Level 2 BTEC Diploma Gorseinon/Tycoch Campus **Course length: one year**

This one-year course is designed to equip learners with the knowledge, understanding and skills required for success when moving towards a career in the public services, for example, Police, Fire Service, Armed Services or the Prison Service.

What's involved:

Learners will find out about the different public services and how they work individually and interact with each other. They will also have the opportunity to discover the levels of fitness required for the public services and how to improve their health and fitness. Regular outdoor pursuits and adventurous activities are also part of the course, as well as taking part in at least one volunteering activity.

Most students joining the course will possess one GCSE at grade C, supported by a number of others at D or below. Other qualifications and experience will also be considered.

Moving on:

The BTEC Level 2 Diploma is equivalent to four GCSEs at Grade C or above. Students who achieve at least a Merit for each unit of the Level 2 course can progress to the BTEC Level 3 Extended Diploma in Public Services (Uniformed). Other Level 3 courses may also be considered.

Alternatively, students can apply to join a public service, but will need to satisfy their entry requirements and pass the selection process.

Public Services (Uniformed) Level 3 BTEC Extended Diploma Gorseinon/Tycoch Campus **Course length: two years**

This course prepares students for a career within a public service organisation, such as Police, Fire, Ambulance and Armed Forces.

What's involved:

It will provide information about what jobs are available within these services, as well as preparing students for their entry procedures. For students who wish to delay their entry, or who change their career choice, the course will also allow progress on to a suitable higher education programme, including degree courses.

Students will need to achieve 180 credits over two years with 18 study units covering a wide range of topics.

Visiting speakers and educational visits feature regularly on the course. Students have the opportunity to attend such events as outdoor pursuit and teambuilding courses.

Moving on:

Students achieving success on the Extended Diploma course can progress to higher education to study an HND or degree course in a range of subjects. Alternatively, students can apply to join a public service organisation following completion of the course.

Armed Forces Preparation Course Level 1 Traineeship Tycoch Campus **Course length: 13 weeks (follows 5 week Engage taster programme)**

This course will help prepare young persons considering a career in the Armed Forces. It will provide an introduction to the entry requirements and give an insight into military life and expectations.

What's involved:

The course aims to:

- provide a thorough introduction to the entry requirements and induction process for the Armed Forces
- overcome the barriers to entry experienced by some potential recruits due to a lack of basic skills and physical fitness
- enable young people to work towards the skills and abilities that will assist in enlisting and enhancing promotion and career prospects in the Armed Forces

Moving on:

It is anticipated that most young persons completing the programme will wish to join the Armed Forces. For those who don't, a range of alternatives exists such as Public Services, employment or further education courses, including BTEC Public Services at Level 2 or Level 3.



Science



Applied Science
Pre Entry - Entry 2
Level 2 BTEC Diploma
Tycoch Campus
Course length: one year

What's involved:

This course enables learners to acquire knowledge of fundamental science. They will study units in:

- Chemistry and our earth
- Energy and our universe
- Biology and our environment
- Applications of physical science
- Health applications of life science
- Practical scientific project
- The living body
- Using mathematical tools in science
- Designing and making useful devices in science
- Chemical analysis and detection

Moving on:

Students usually progress onto the Level 3 BTEC Extended Diploma in Science.



Forensic/Medical Science
Level 3 BTEC

Tycoch Campus

Course length: one or two years

GCSE grade C in science is required - equivalent qualifications, such as BTEC Level 2, will also be considered.

What's involved:

Each unit is taught by a specialist lecturer. Assignments are set regularly and marks are posted online. Students' progress is overseen by their personal tutor and by the course team as a whole.

BTEC Certificate

Course length: one year

The Level 3 Certificate has three units. Progression to the Subsidiary Diploma (equivalent to an A Level) is possible.

BTEC Subsidiary Diploma

Course length: one or two years

The Level 3 Subsidiary Diploma has six units. The course takes two years but can be 'fast tracked' to complete it in one year.

BTEC Diploma

Course length: two years

The Level 3 Diploma has twelve units. Specialist forensic science or medical science units are taken in year 2.

BTEC Extended Diploma

Course length: two years

The Level 3 Extended Diploma has eighteen units. Specialist forensic science or medical science units are taken in year 2.

Moving on:

An ideal course for progression to higher education. Past students are studying for degrees in medical genetics, biology, paramedic training, forensic science, dental technology, criminology and biochemistry.



Deborah Pye receiving the Outstanding Vocational Student of the Year - Arts & Sciences award 2013 - she has now progressed to the second year of the Level 3 Extended Diploma in Applied Science.

Sport



There are Welsh speaking staff in this area.



WELSH COLLEGES
SPORT

FAW
FOCUS COLLEGE
COLEG FFOCWS

Sport
Level 2 BTEC Diploma
Tycoch Campus
Course length: one year

This course will help students develop skills that are useful within the sports and fitness industry. It contains practical and theoretical modules that are continually assessed throughout the year by coursework. Students will also get the opportunity to gain extra sports coaching qualifications.

What's involved:

There is potential for the qualification to prepare learners for employment in the appropriate vocational sector and it is suitable for those who have decided that they wish to enter a particular area of work. It is broadly equivalent to four GCSEs.

Study units include practical sport, outdoor pursuits, instructing exercise, body in sport, training and fitness, health and safety in sport, planning and leading sport, preparation for sport and teaching/assessment.

Moving on:

Successful completion may lead to employment in the sports/leisure industry or progression onto a Level 3 course in Sport or a related subject area.

Sport (Development, Coaching and Fitness)
Level 3 BTEC Extended Diploma

Gorseinon/Tycoch Campus
Course length: two years

This course has a focus on the study of the human body in sport, coaching skills and fitness instruction. There is also an emphasis on improving and developing sport within society.

What's involved:

Students who choose this pathway should have a wide range of sporting interests and enjoy taking part in all activities. As many course units are related to leadership and coaching, students should also be confident to work with peers and young children in schools.

There are close links with the community, with students often gaining experiences away from the college environment.

Moving on:

This qualification is valued by employers within the sport and leisure industry and higher education providers.

Common university courses include sport and PE, leisure management studies, sports coaching, sporting development and teaching PE. Other students may follow in professional training in gym/personal instruction. This course is suitable for students looking to enter a career in the uniformed services.

Sport and Exercise Science
Level 3 BTEC Extended Diploma

Gorseinon/Tycoch Campus
Course length: two years

On this sport and exercise course students study the application of scientific principles and techniques with the aim of improving sporting performance.

What's involved:

Topics covered will incorporate areas of physiology, psychology, biomechanics, nutrition, research and sports injuries.

Moving on:

This qualification can lead to a HND or degree in sports science, sports coaching, sports development, sport and physical education, teacher training or sports therapy.

Sports related employment with agencies such as governing bodies, local authorities and sports clubs in the community.



Travel and Tourism



Travel and Tourism

Level 2 BTEC Diploma

Tycoch Campus

Course length: one year

This course is designed for students to develop skills and knowledge of travel and tourism. It will enable them to progress onto the Diploma in Travel and Tourism, enhancing students' prospects of gaining employment in the travel industry

What's involved:

The course covers a range of units, all of which relate to the vast industry of travel and tourism.

Additional qualifications enhance the programme e.g. event planning (NCFE qualifications) and work skills.

Moving on:

Success on the course can lead to progression to the Diploma in Travel and Tourism or employment in the travel and tourism industry.

Travel and Tourism

Level 3 BTEC Diploma

Tycoch Campus

Course length: two years

This course prepares students with the skills and knowledge necessary for progression into the travel and tourism industry or higher education in travel and tourism management. Five GCSE subjects at grade C or above, to include English, or a Merit in a Level 2 Diploma in a related subject will be required to undertake this course.

What's involved:

Learners will complete 120 credits - 60 credits in Year 1 and 60 credits in Year 2.

Work skills, essential skills and a language are often studied to support and enhance the programme along with an 'Air Cabin Crew' and 'Resort Representatives' qualification.

During the second year of the course you will have to undertake a mandatory residential study visit.

Moving on:

The BTEC Diploma in Travel and Tourism is valued by employers and higher education providers and there are several alternative routes for progression.

Employment opportunities exist in attraction management, tourist board marketing, children's rep, air cabin crew, airport customer services and events management.

Higher education at university or college to take a degree or HND in subjects such as hospitality management, leisure venue management, tourism management, international tourism management or air travel management.

Mock Cabin

Travel and tourism students are flying high thanks to a simulated aircraft cabin.

The cabin, which comes complete with rows of seating for passengers and overhead baggage compartments, will be used by students for simulation and role play activities.

Students are able to interact with each other within a real working environment.



Destination Unknown

Students can perfect their skills in a 'virtual' travel office at the college.

'Destination unknown' plays a crucial role in the students' development as it gives them the opportunity to practise their customer service skills and expand their knowledge via live role-play.



Gower College Swansea

Tycoch Sports Centre

Student Membership
ONLY £30
a year

The Sports Centre, situated at the Tycoch Campus, has a fully equipped conditioning studio, free weights room, and a multipurpose sports hall and squash courts.

Join us in our friendly and relaxed atmosphere and see what we have to offer. Our dedicated team of professional and qualified staff are looking forward to helping you achieve your personal health and fitness goals. We have a sports hall available for team games or training hire, such as 5-a-side football or basketball.

Exercise Classes

We offer a range of exercise classes that are fun and energetic, which cater for all levels of fitness.

Children's Parties*

Let the Sports Centre offer you the perfect party venue for your children.



Our multipurpose sports hall is available for hire on Saturday and Sunday plus Monday to Friday afternoons during school holidays (excluding bank holidays).

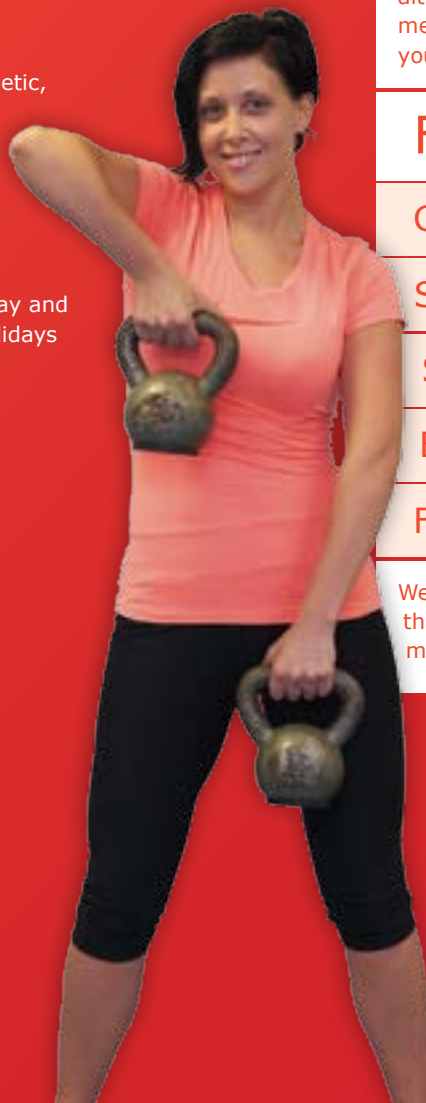
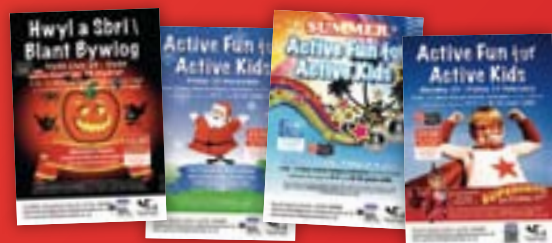
Our parties can include any games such as football, basketball, rounders, mini Olympics, multigame activities and a 25ft bouncy castle.

School Holiday Activities*

Active fun for active kids

School holiday activities run for children between the ages of 4-7 and 8-12 year olds. Sessions include multigame activities, a wii fit console and a 25ft bouncy castle.

**All sessions are run by a minimum of two trained members of staff.*



Open to the public

You don't need to be a member to use our facilities, although there are a range of membership options to suit your requirements.

Facilities:

Gym

Sports hall hire

Squash courts

Badminton courts

Fitness testing

We are **open 7 days a week**, throughout the year, early morning till late evening.

Gower College Swansea Sports Centre, Tycoch SA2 9EB

sportscentre@gowercollegeswansea.ac.uk

www.gowercollegeswansea.ac.uk

01792 284088

www.facebook.com/sportscentre

